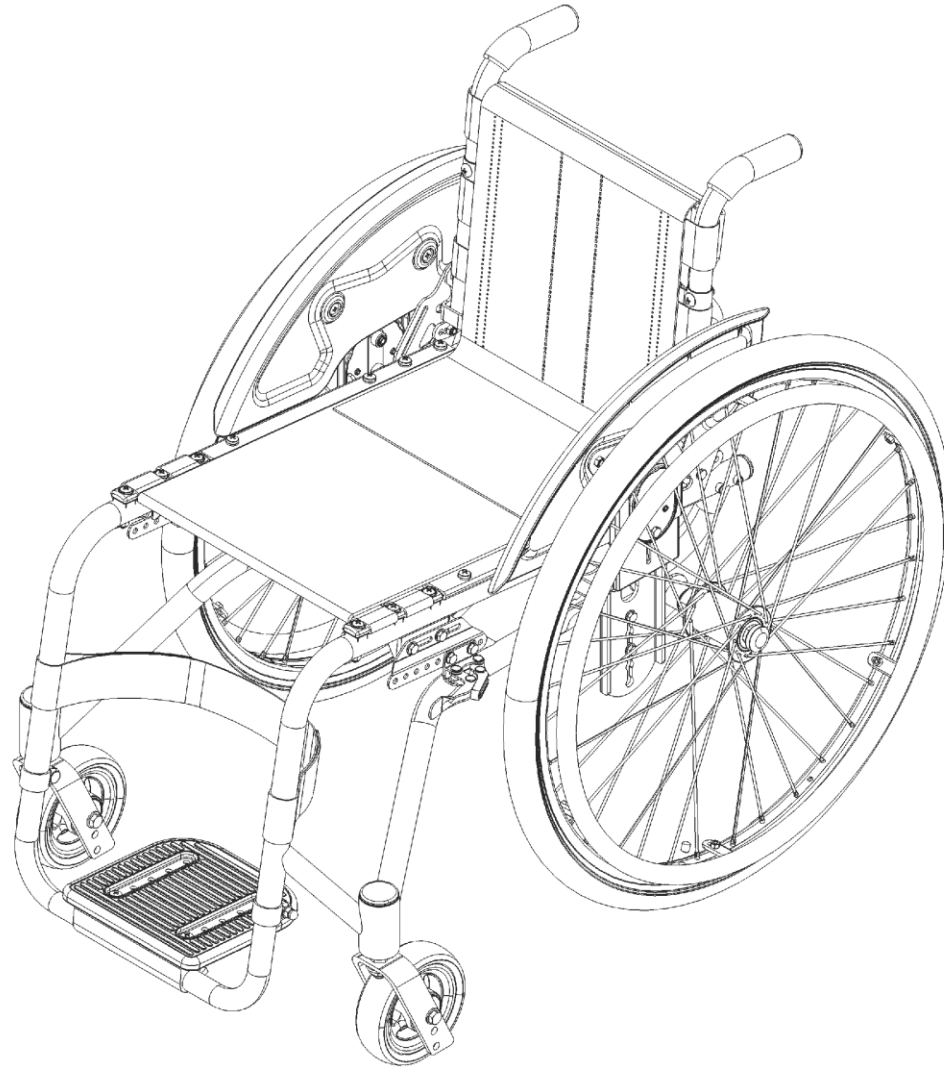


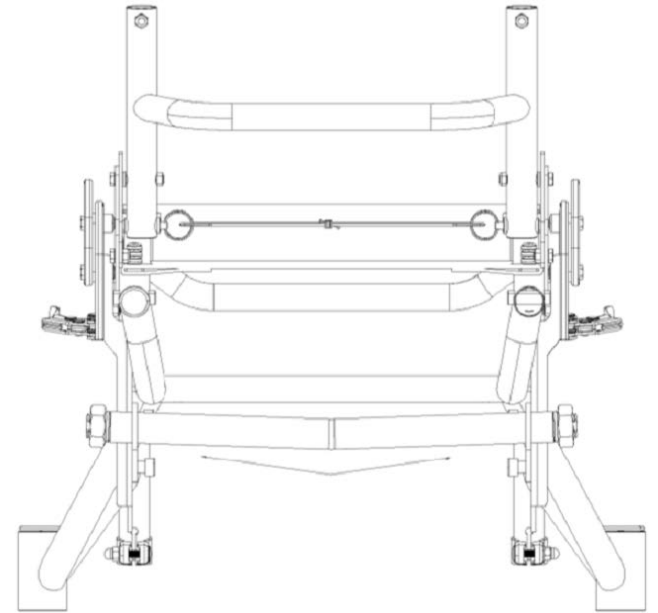
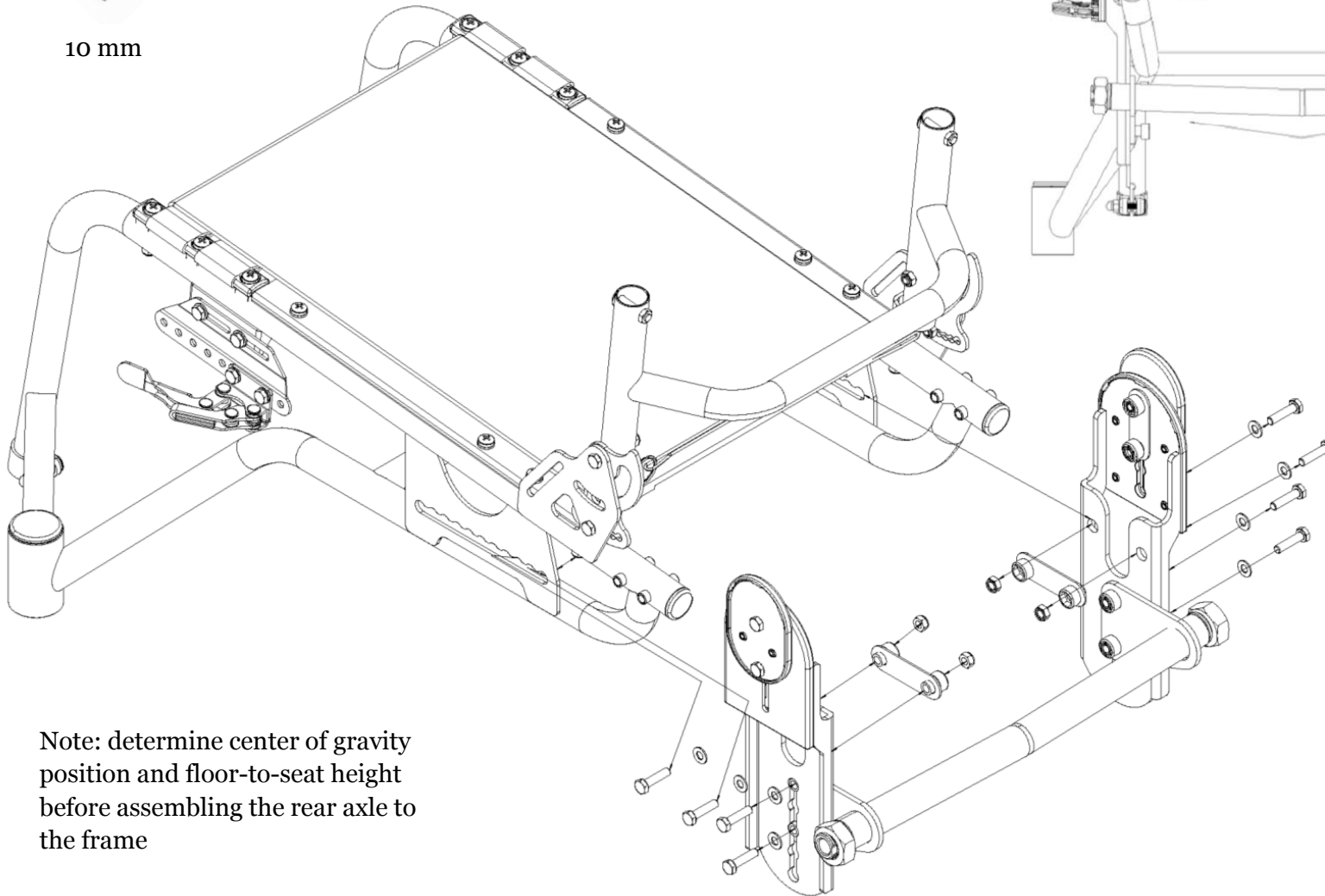
Active Wheelchair Assembly and Adjustment Manual



Assembly: Rear Axle

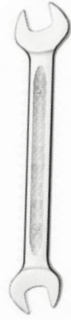
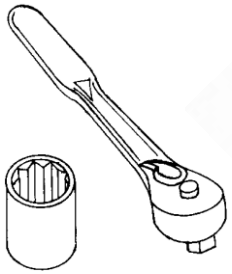


10 mm

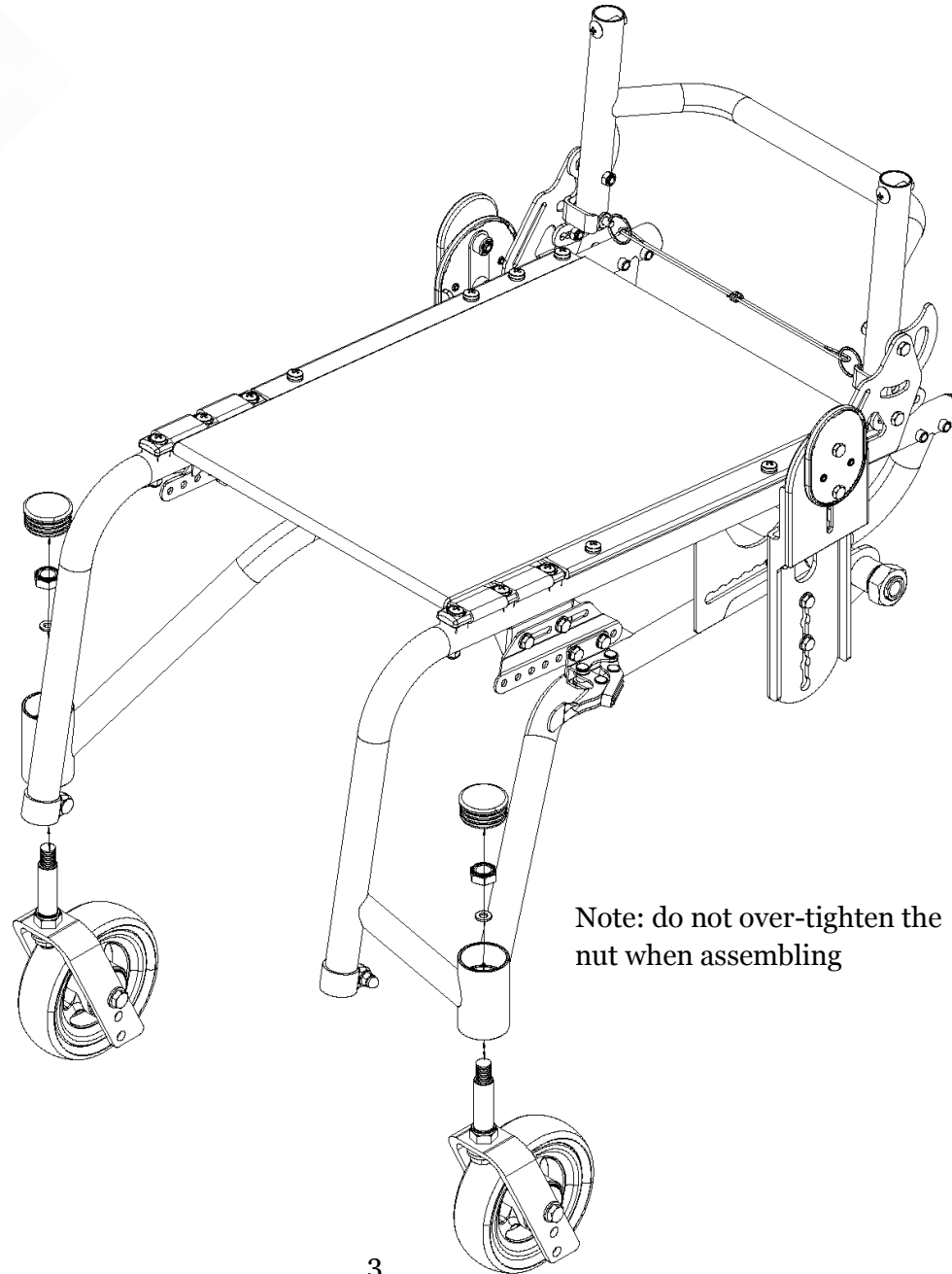


Note: determine center of gravity position and floor-to-seat height before assembling the rear axle to the frame

Assembly: Front Castor Wheels

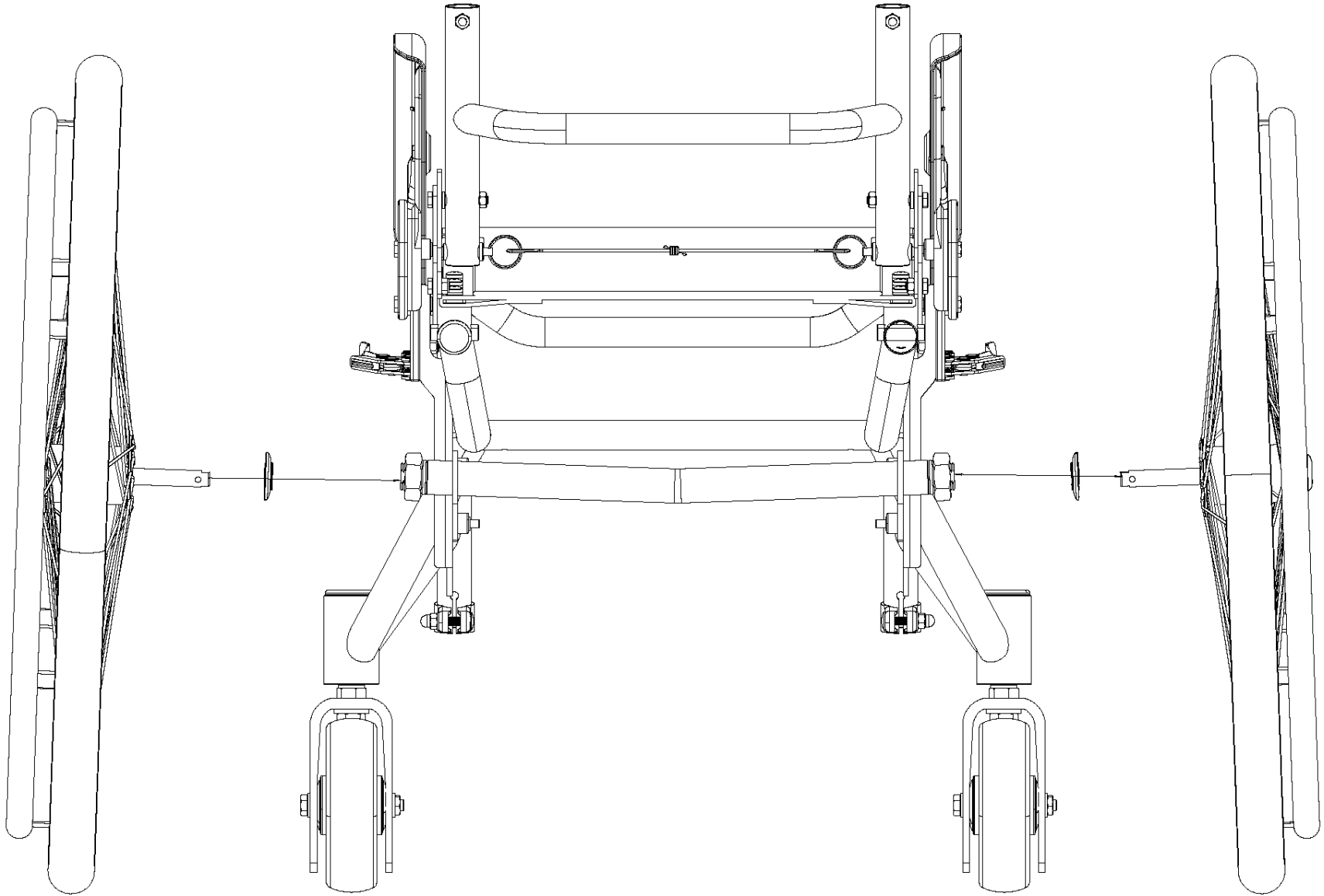


19 mm

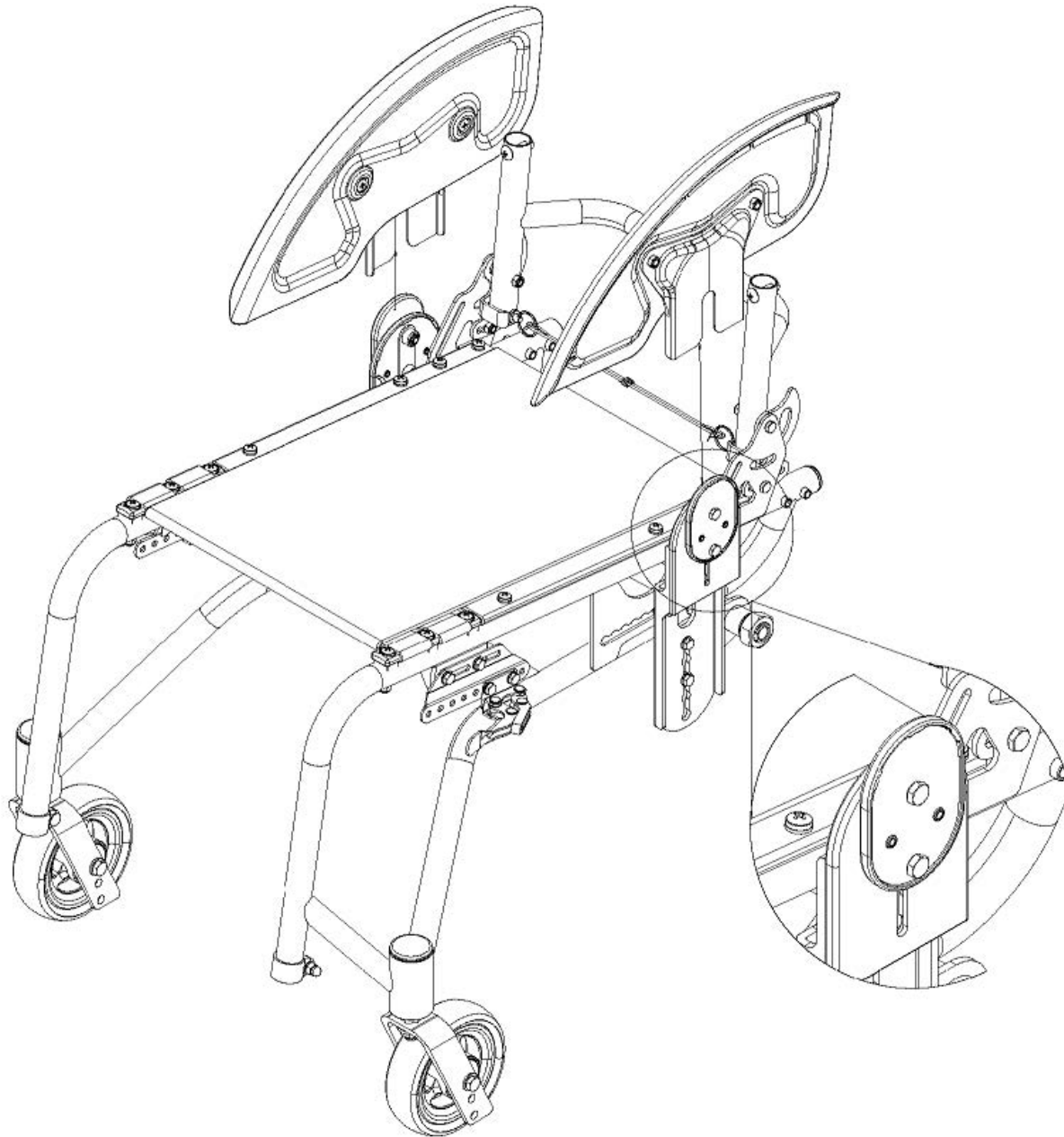


Note: do not over-tighten the nut when assembling

Assembly: Rear Wheels



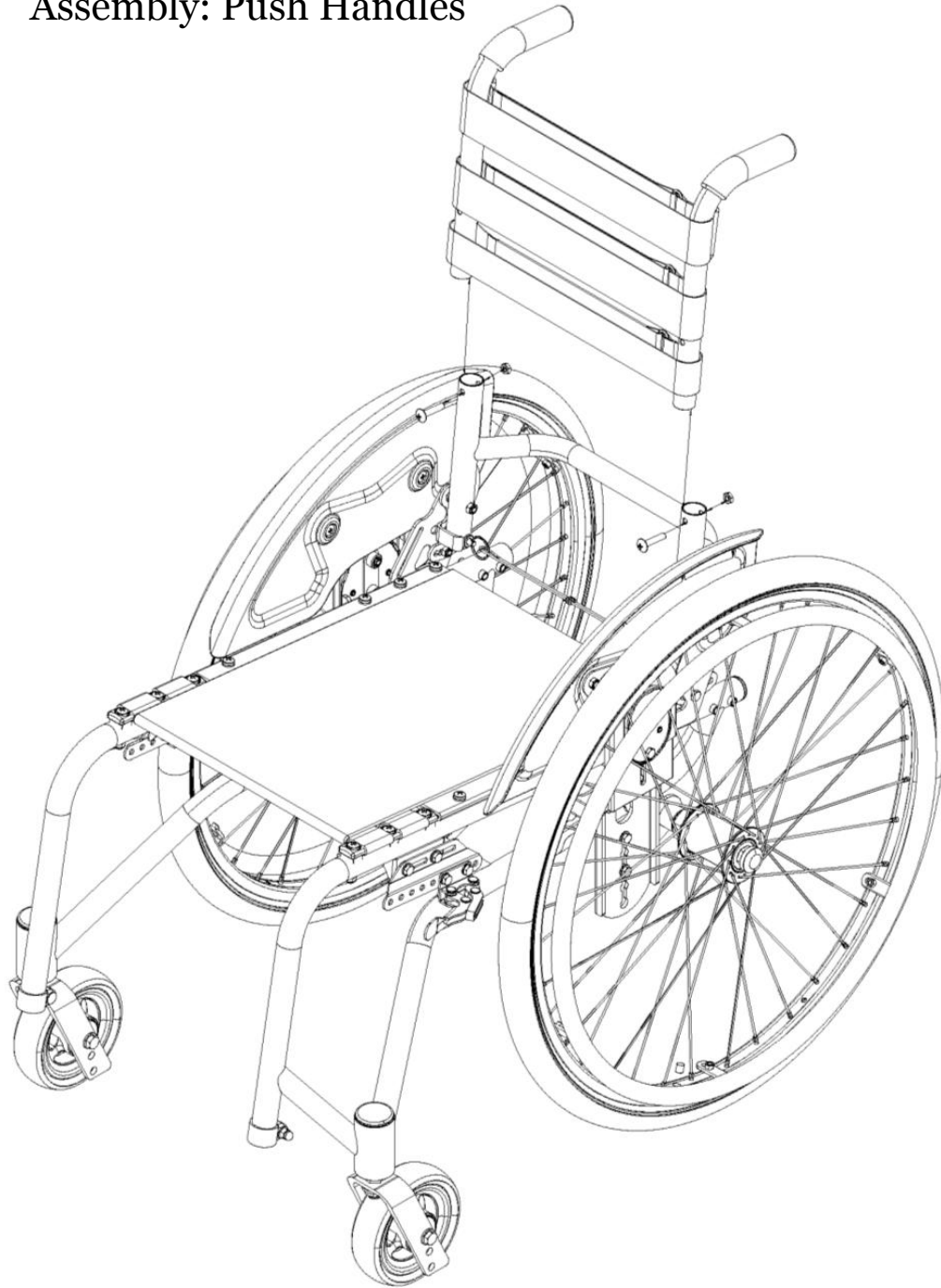
Assembly: Side Guard



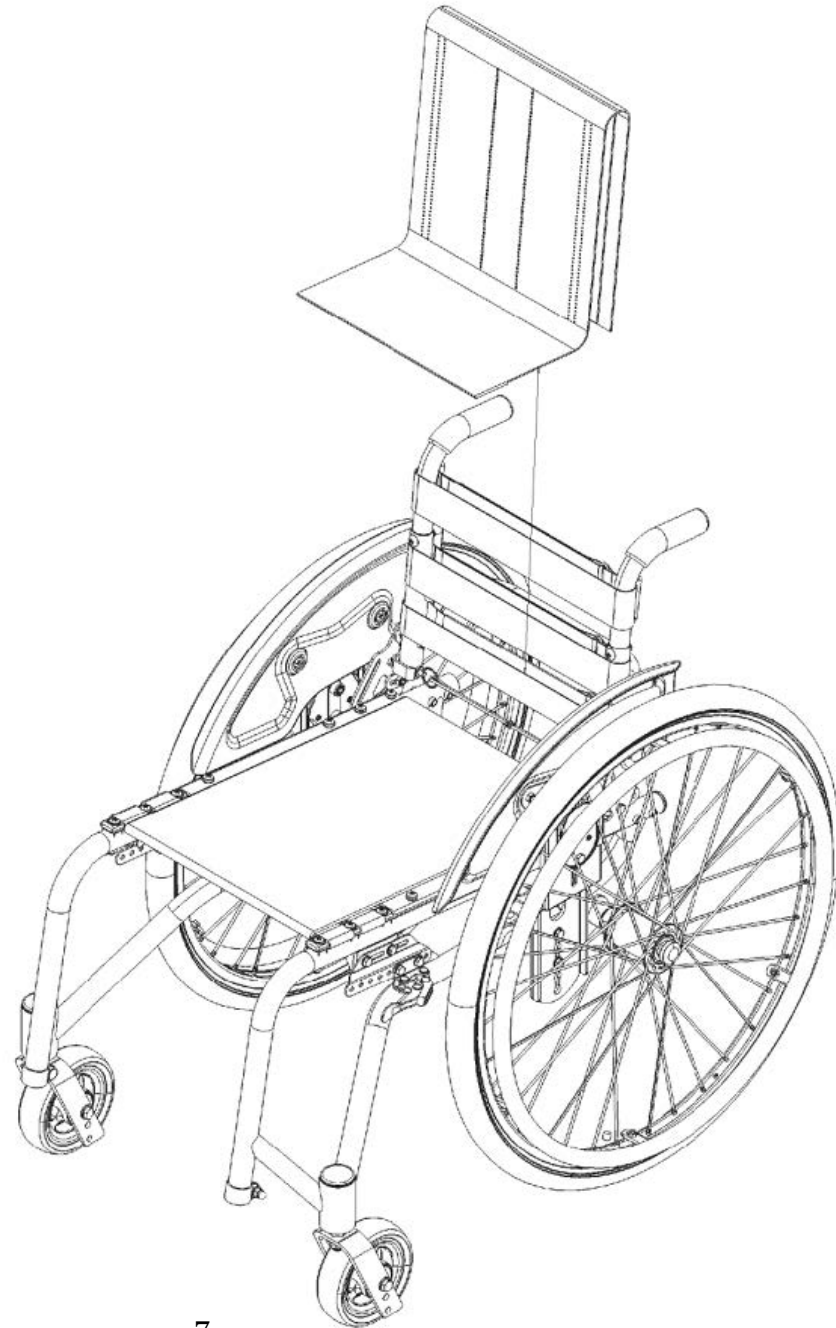
Assembly: Push Handles



10 mm



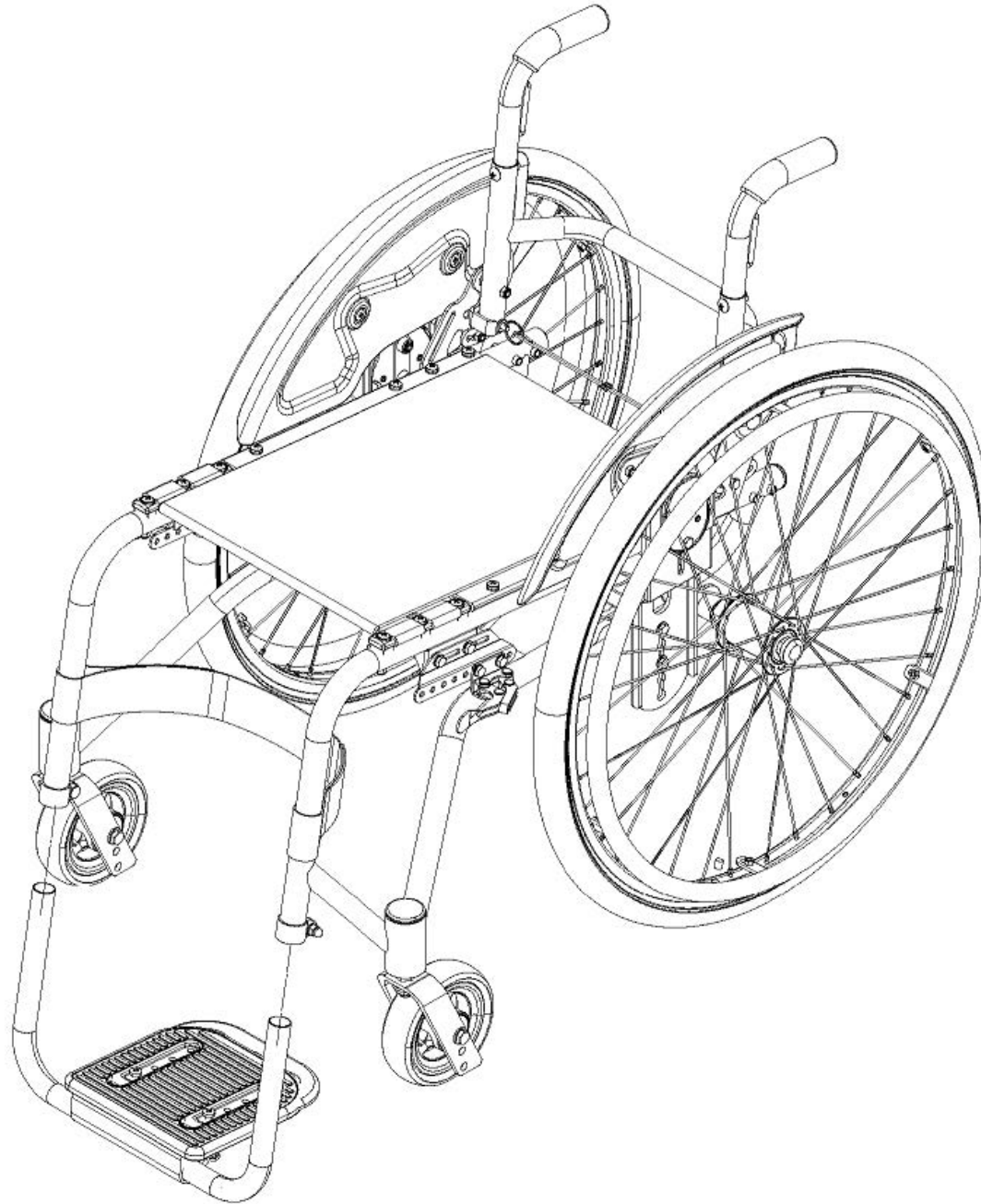
Assembly: Backrest Cover



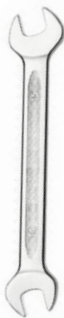
Assembly: Footrest



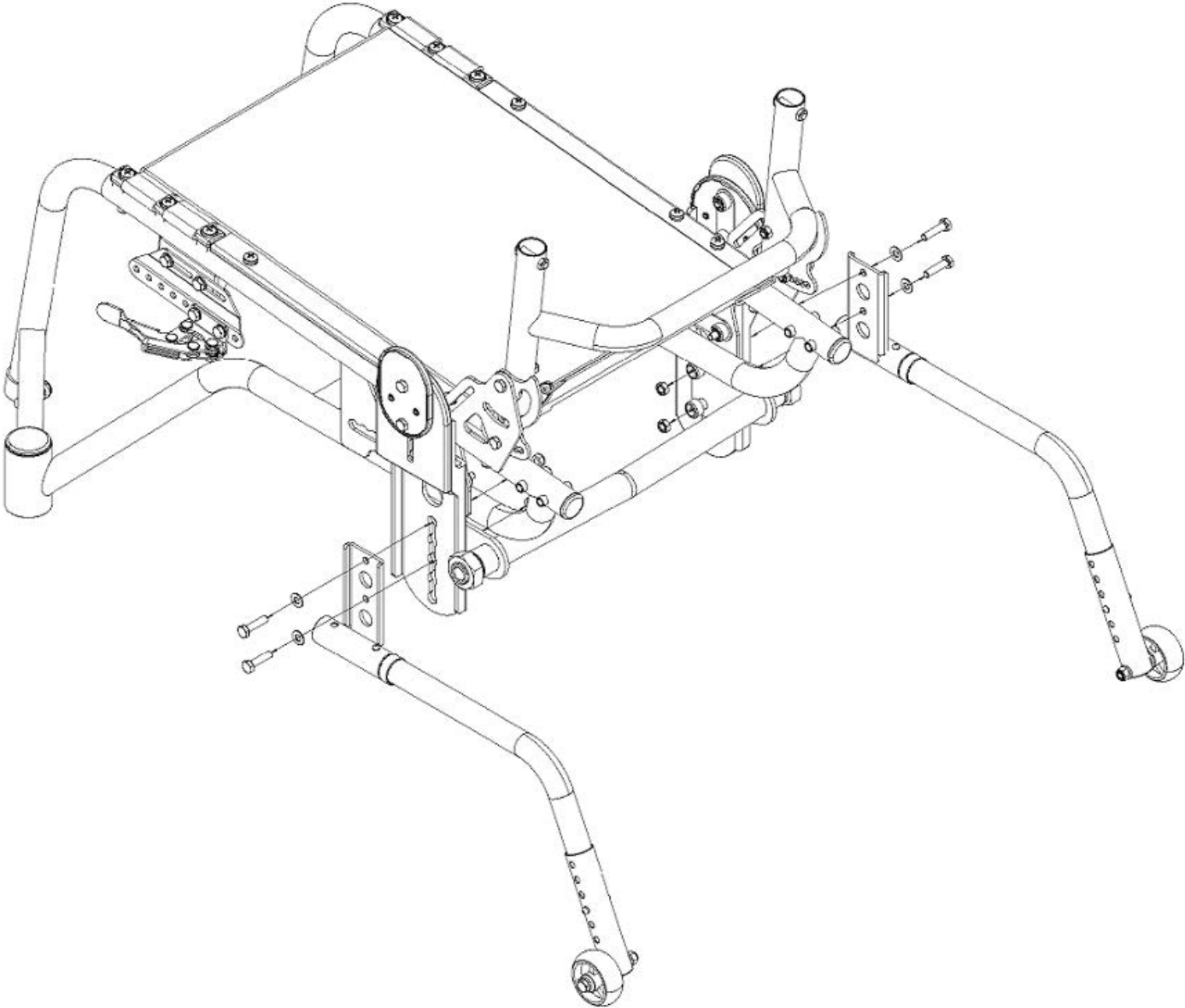
10 mm



Optional Assembly: Rear Axle with Anti-Tip Bar

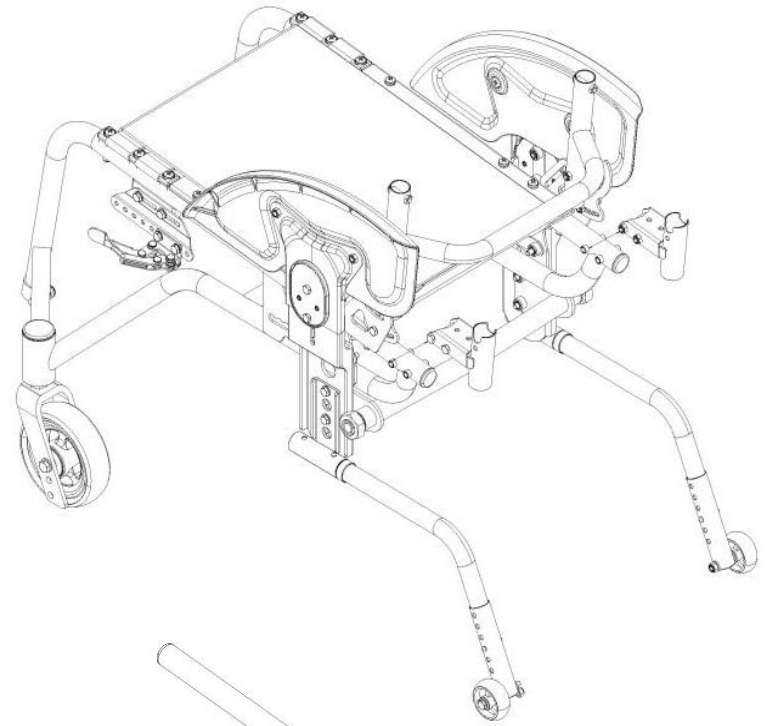


2 x 10 m



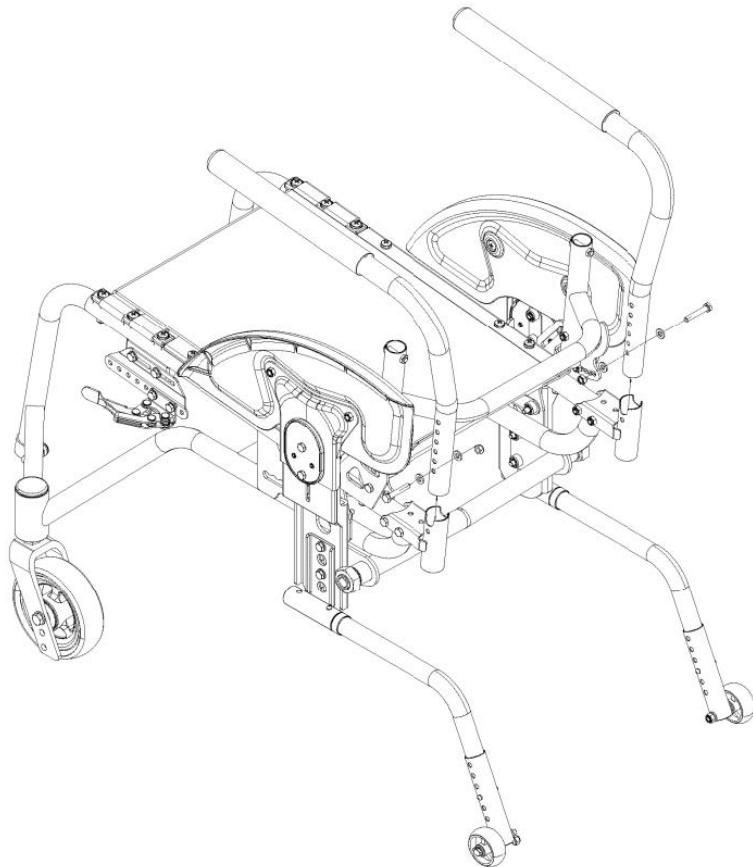
Optional Assembly: Armrests

Step 1

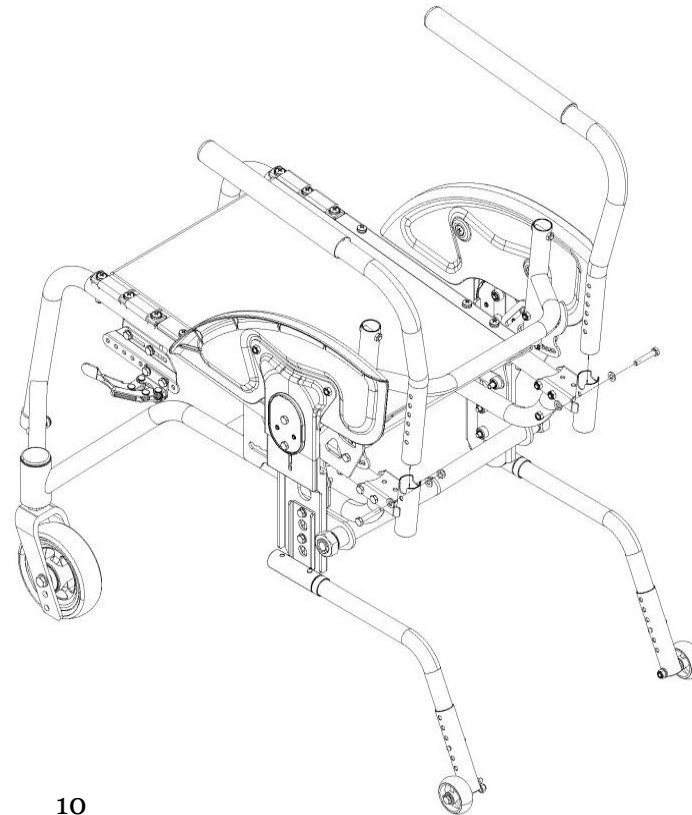


2 x 10 mm

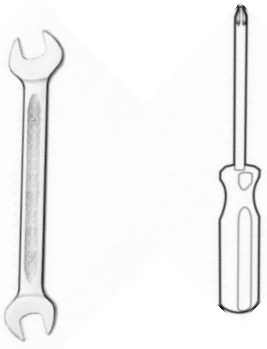
Step 2: Removable



Step 2: Fixed

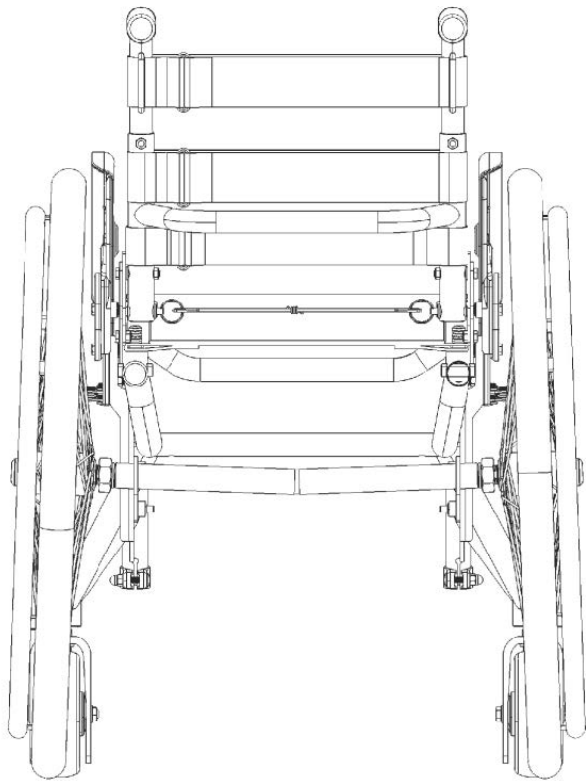


Adjustment: Backrest Height

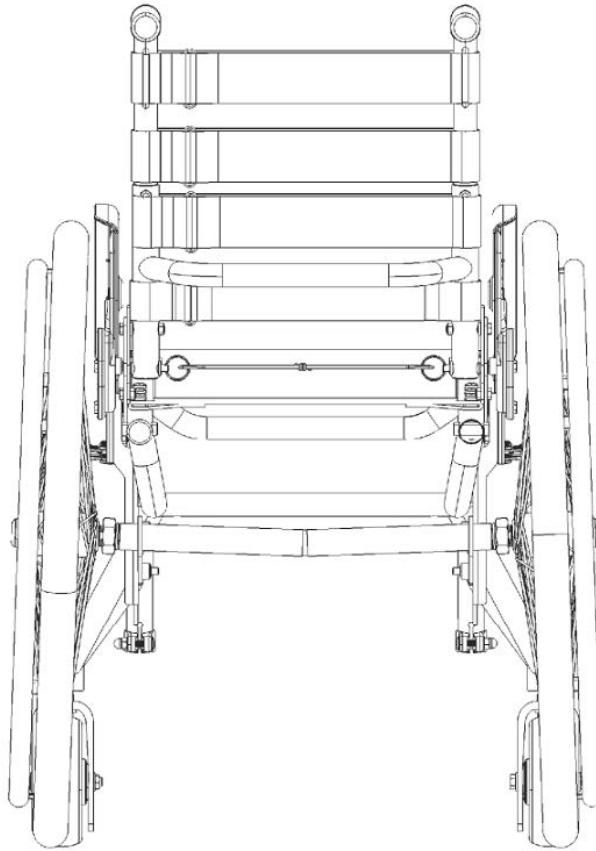


10 mm

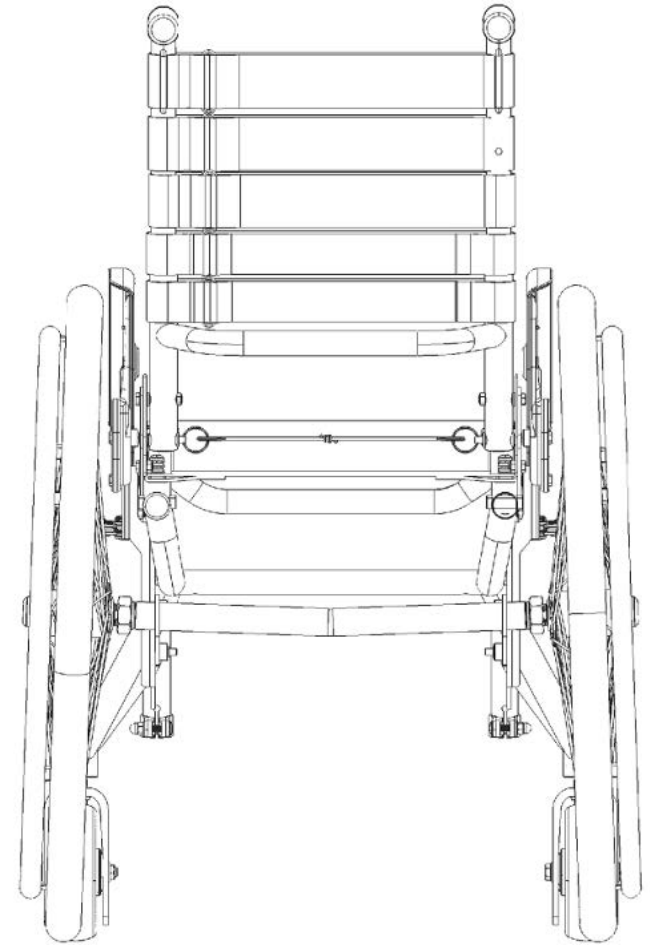
Low



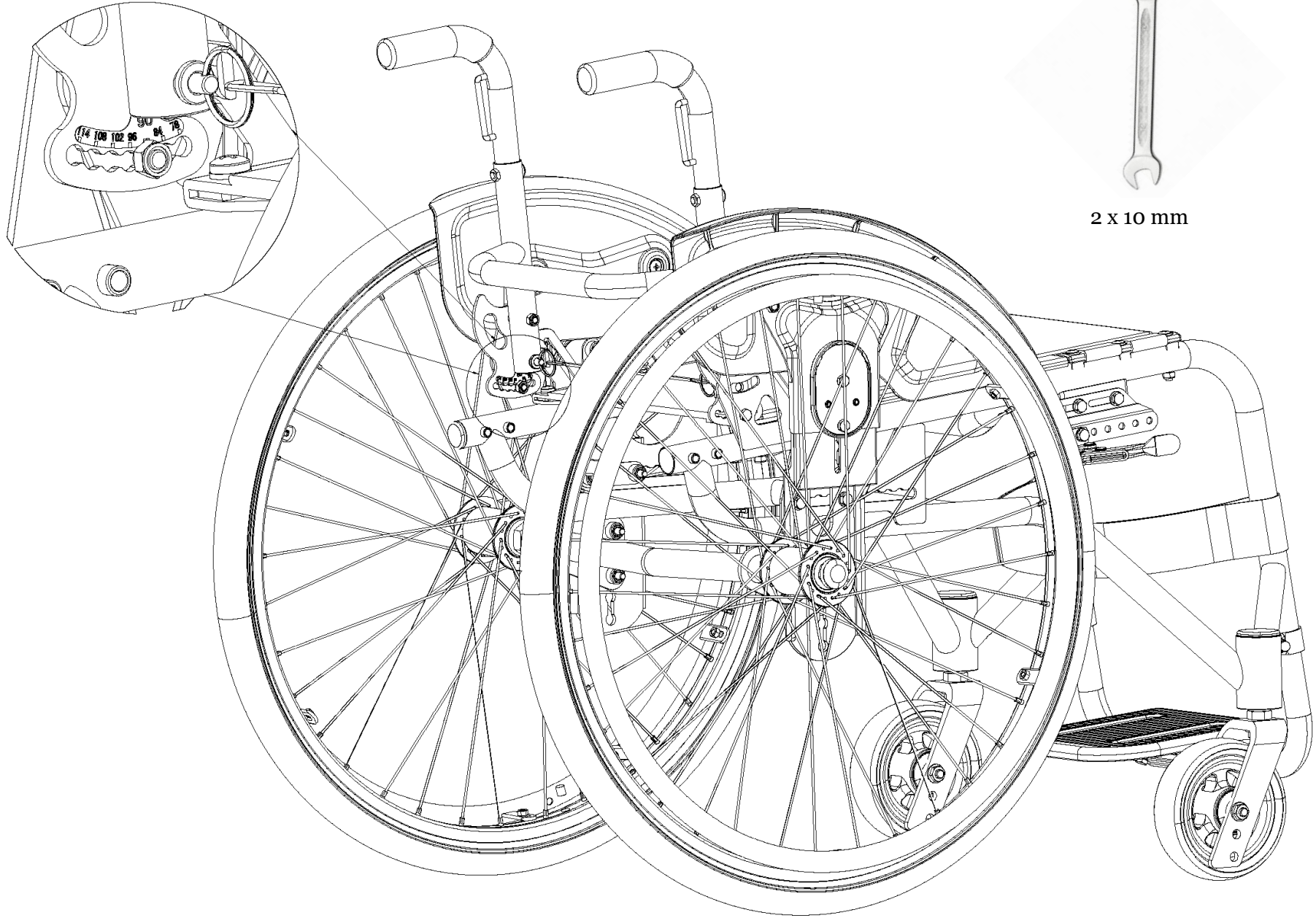
Medium



High



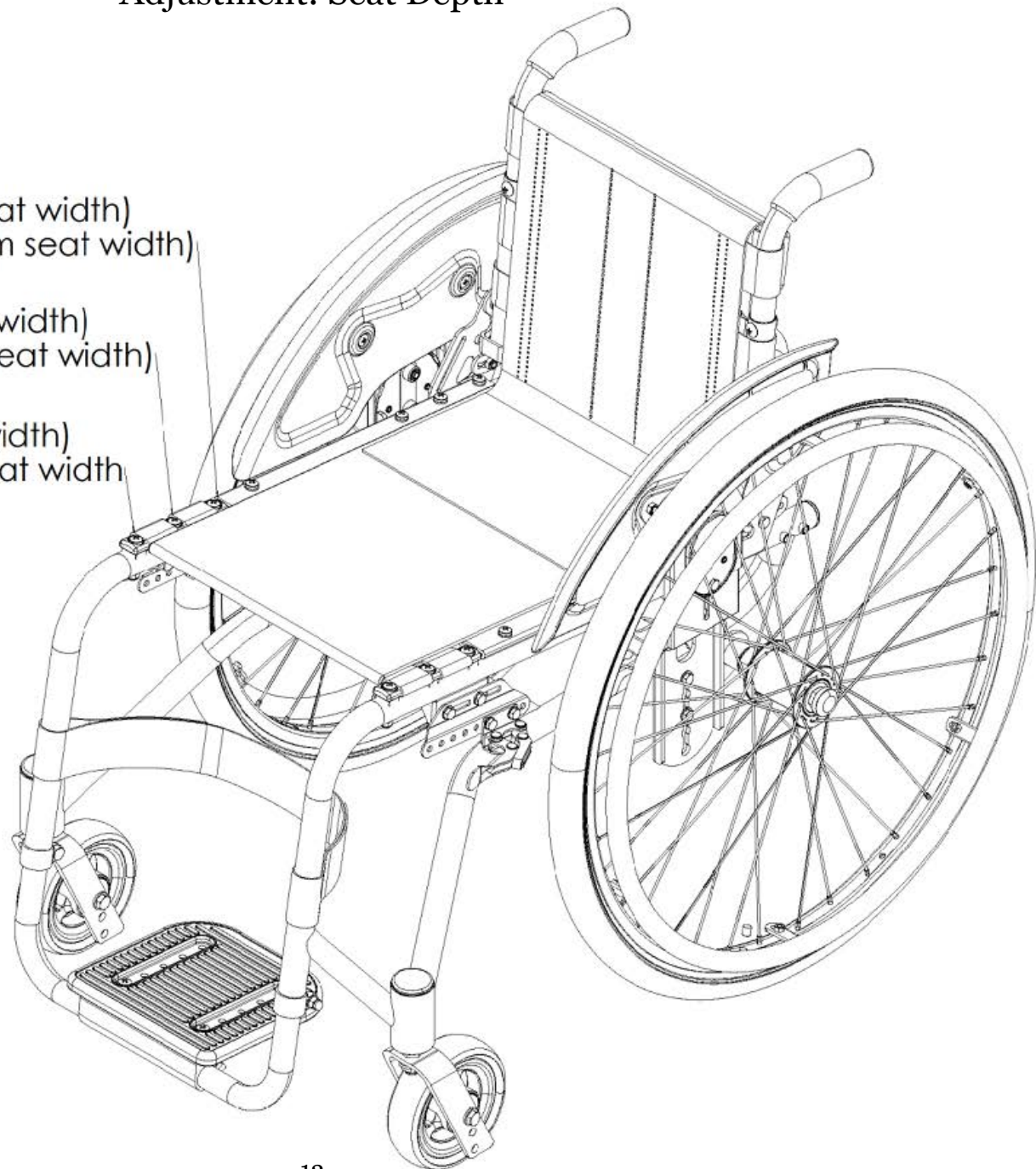
Adjustment: Backrest Angle



2 x 10 mm

Adjustment: Seat Depth

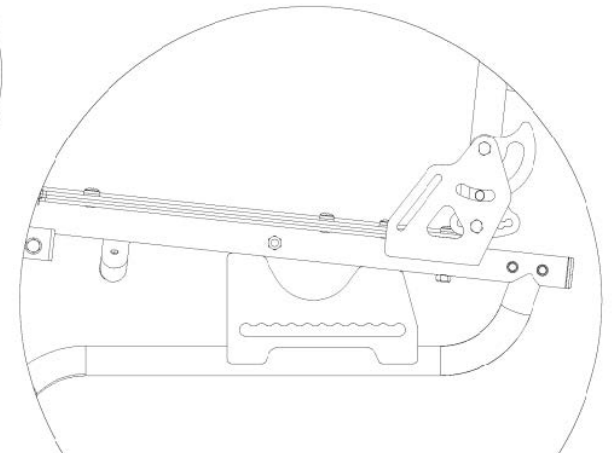
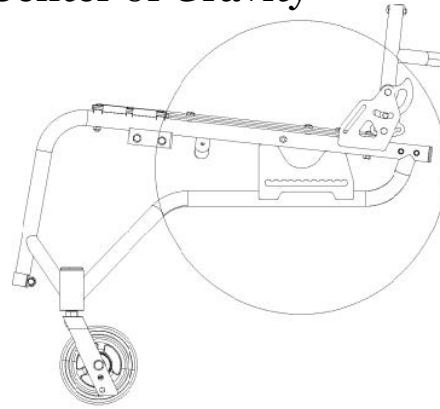
- 300mm (300mm seat width)
350mm (350-500mm seat width)
- 350mm (300mm seat width)
400mm (350-500mm seat width)
- 400mm (300mm seat width)
450mm (350-500mm seat width)



Adjustment: Center of Gravity

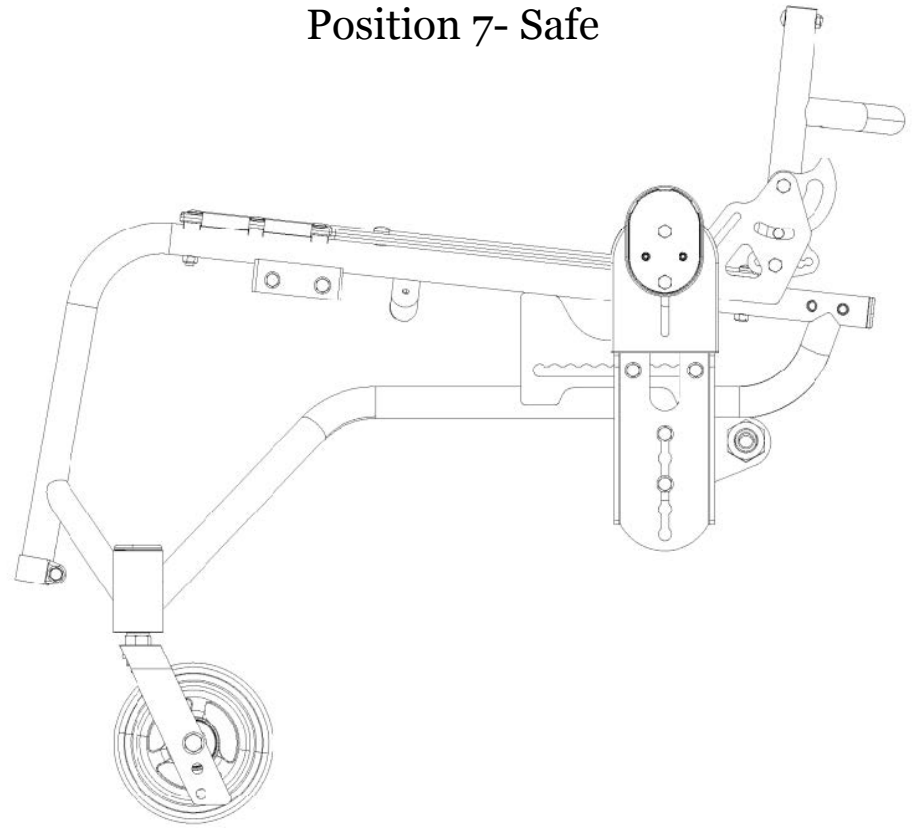
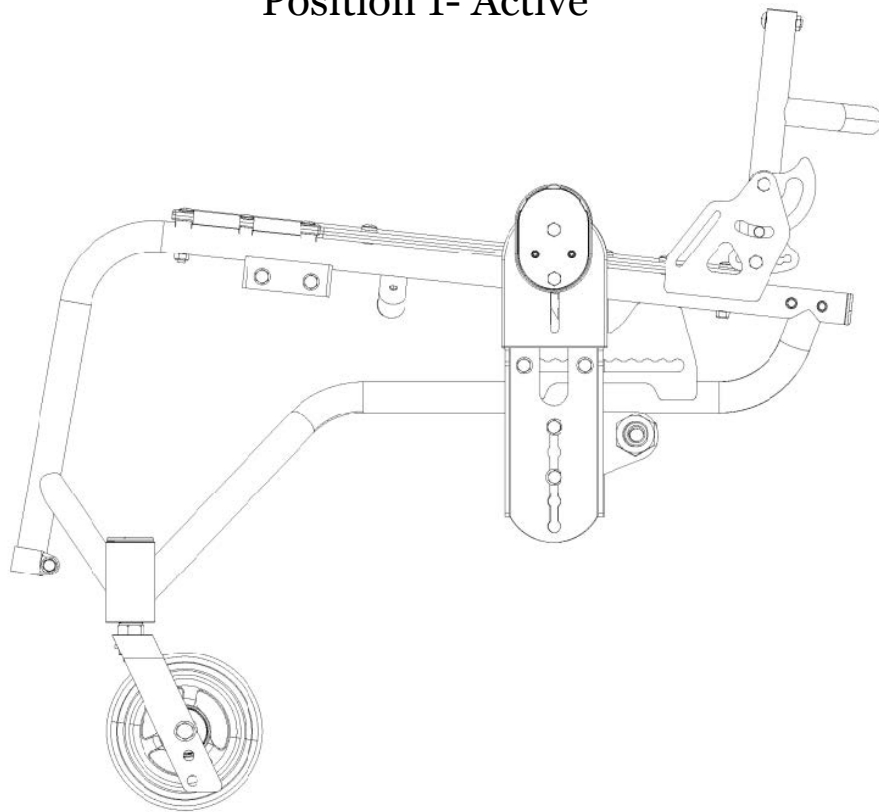


10 mm



Position 1- Active

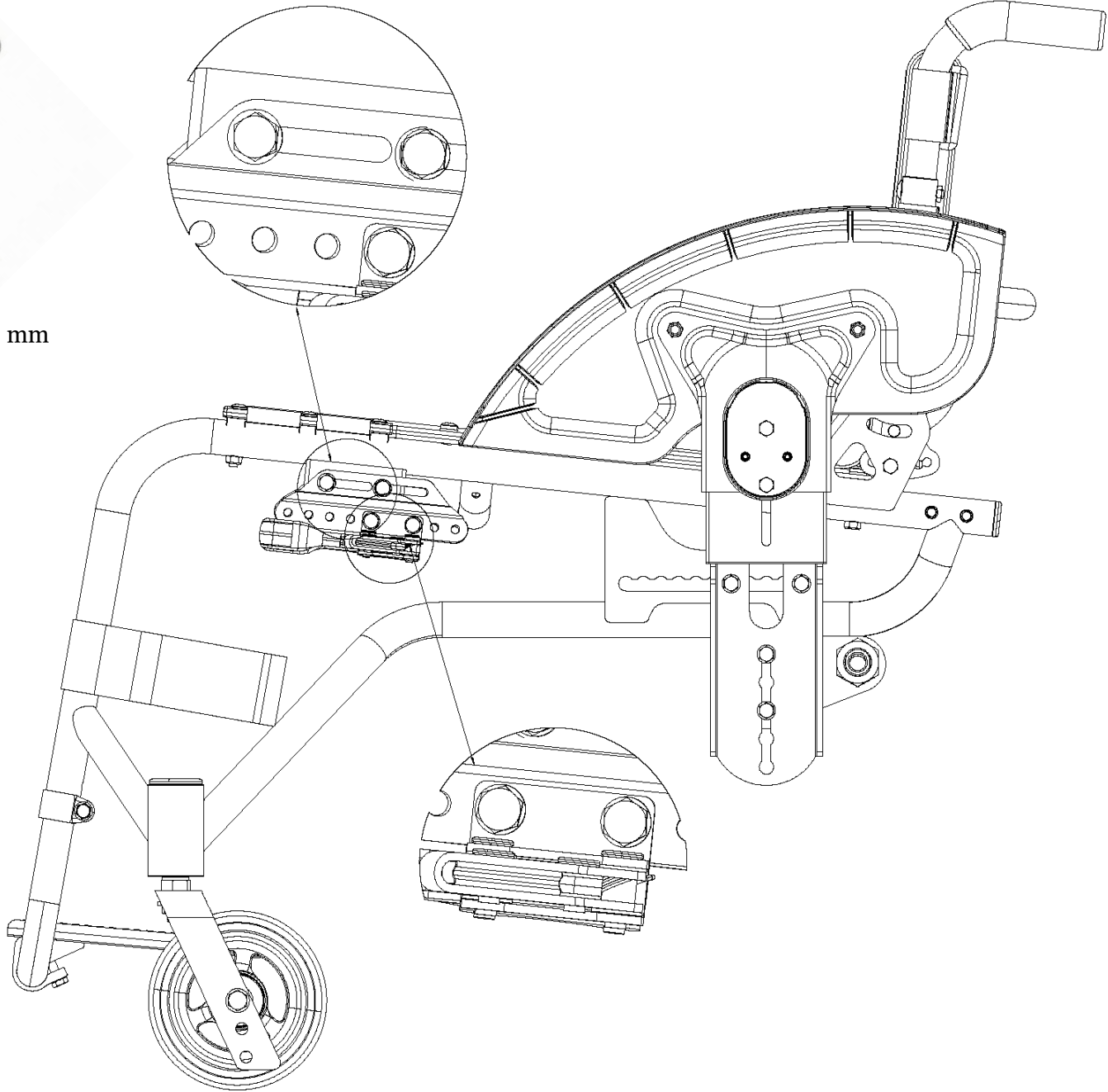
Position 7- Safe



Adjustment: Wheel Locks



2 x 10 mm



Adjustment: Floor-to-Seat Height

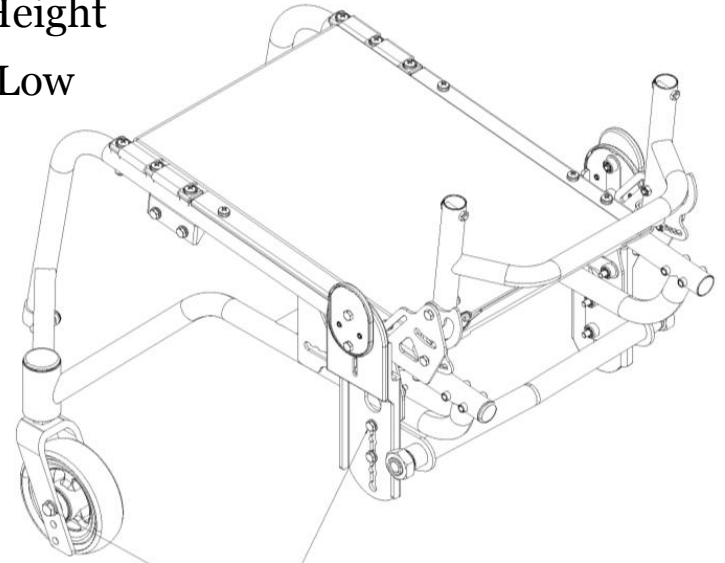


2 x 10 mm



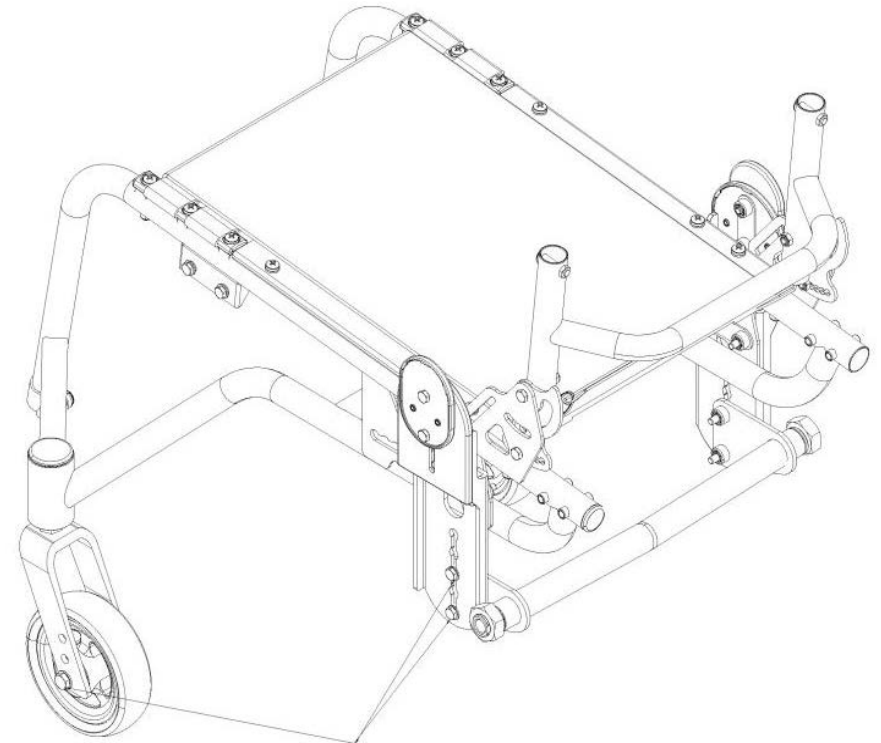
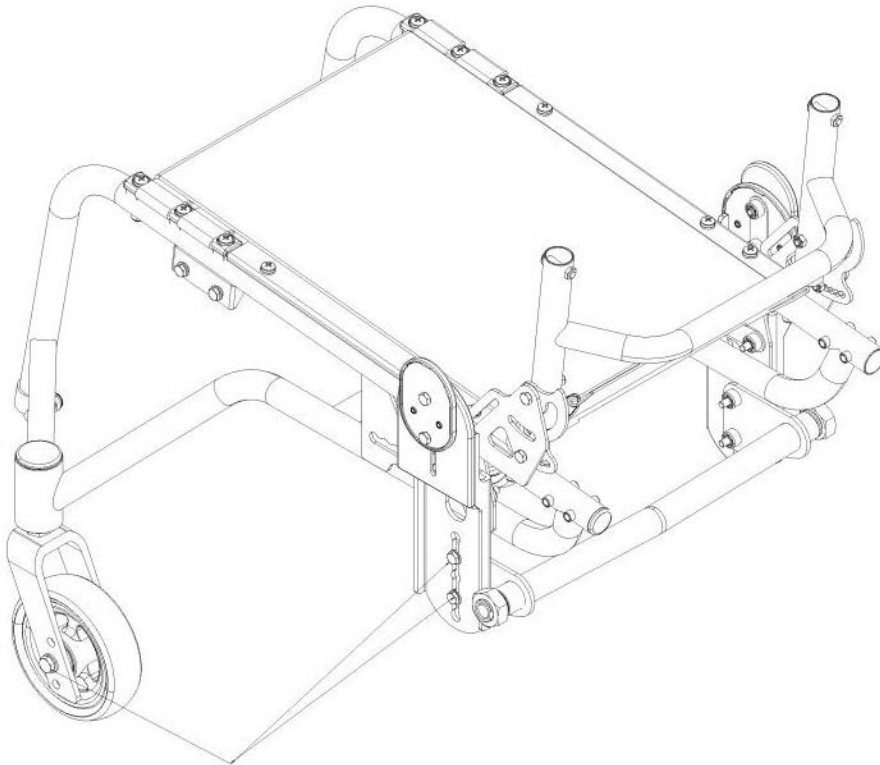
2 x 13 mm

Low



High

Middle

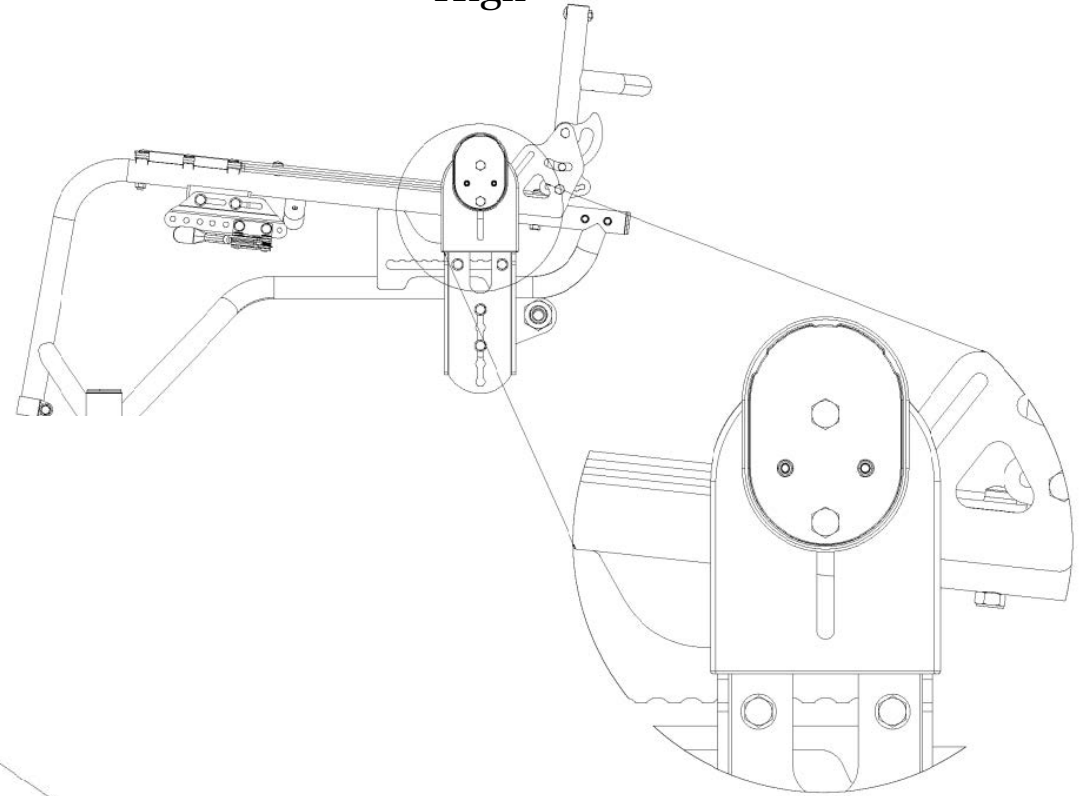


Adjustment: Side Guard Height

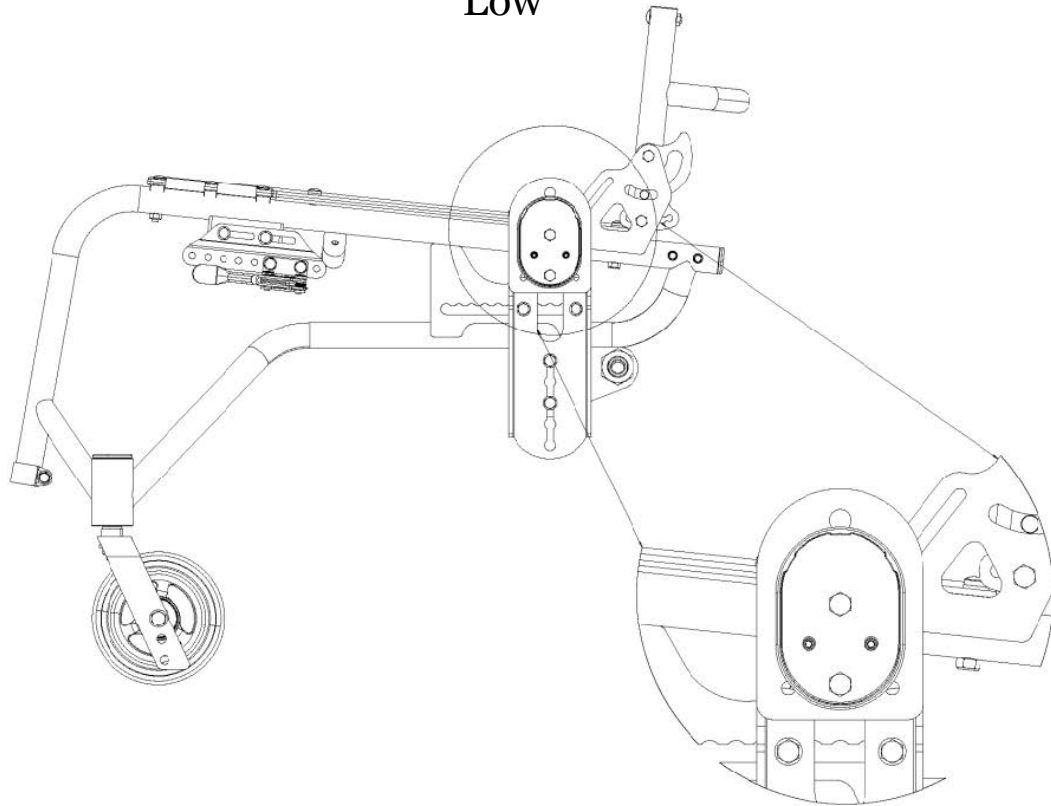


10 mm

High



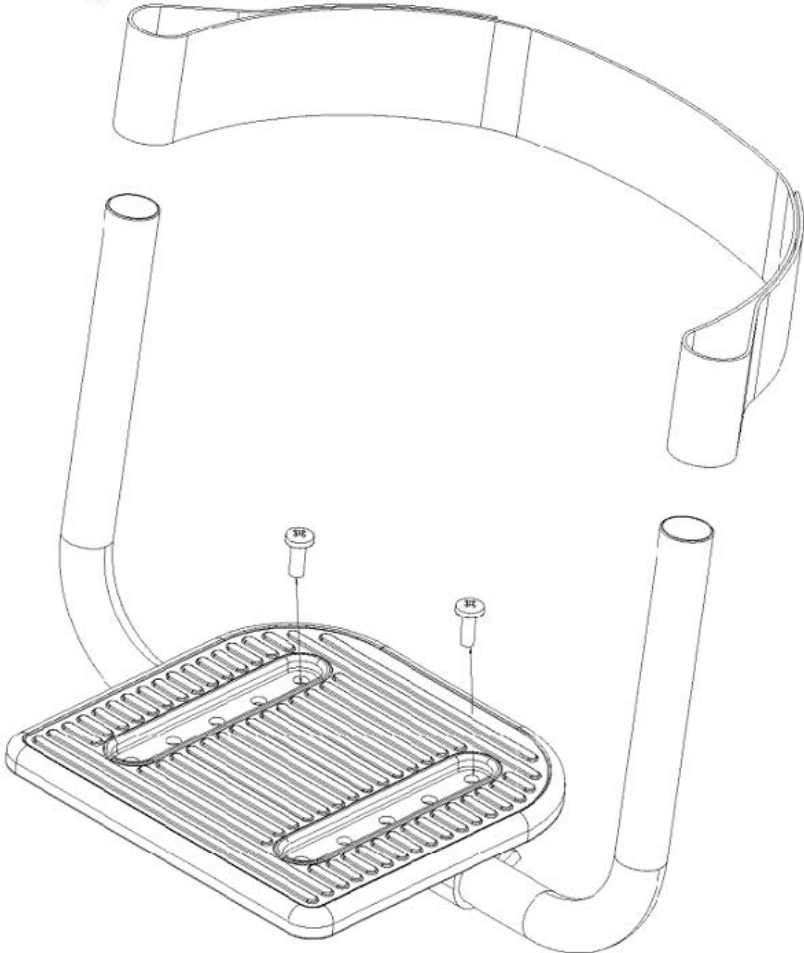
Low



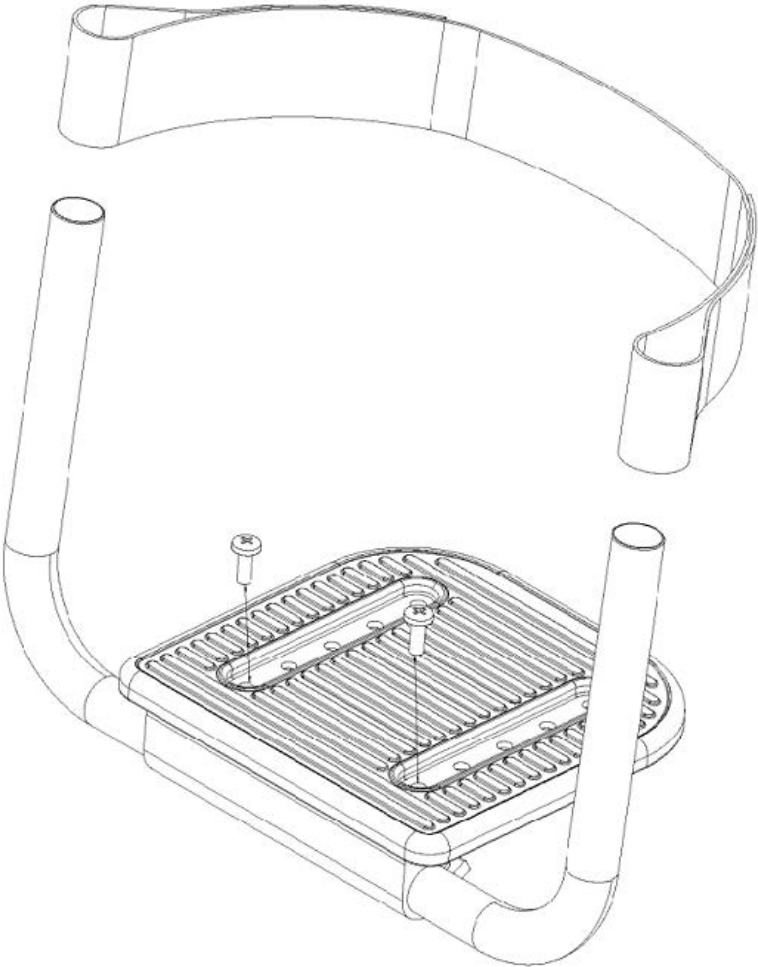
Adjustment: Footrest Position



Forward



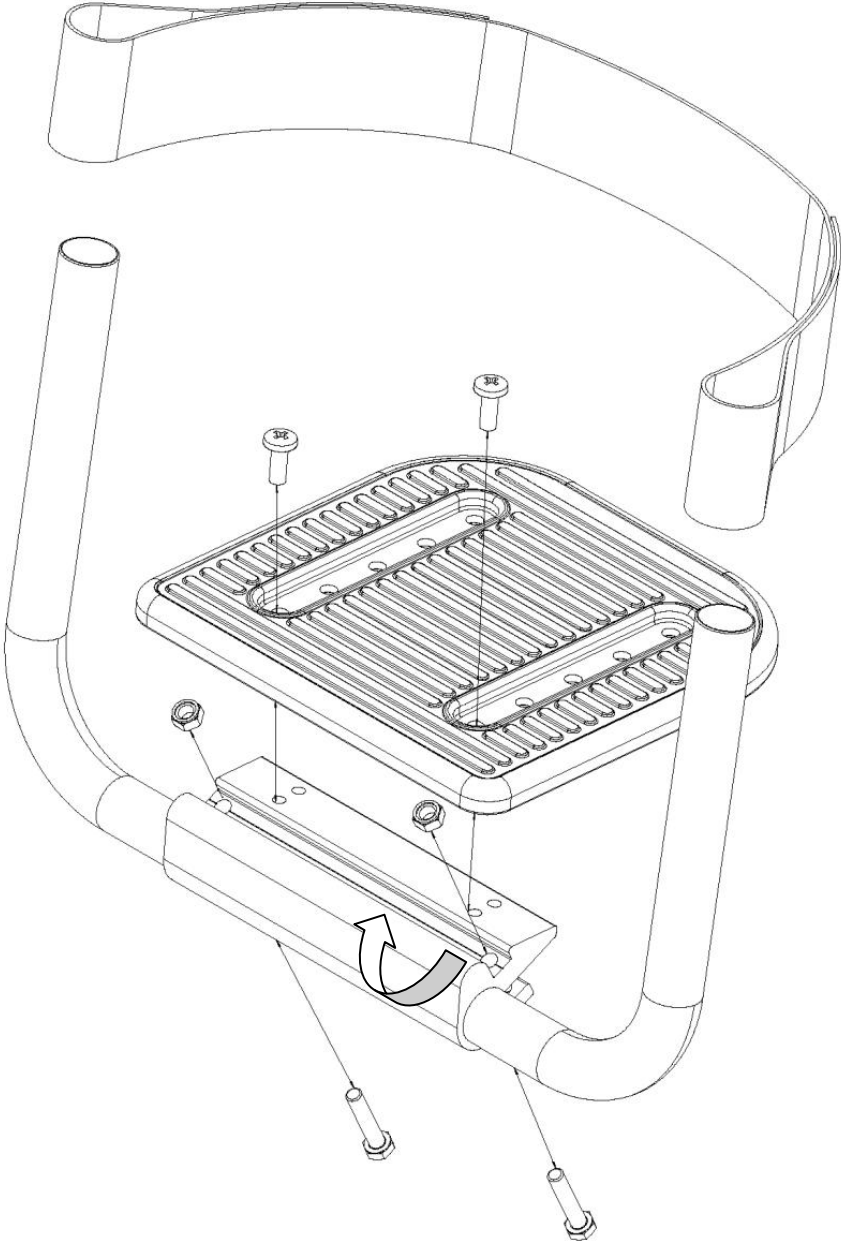
Back



Adjustment: Footrest Angle



10 mm



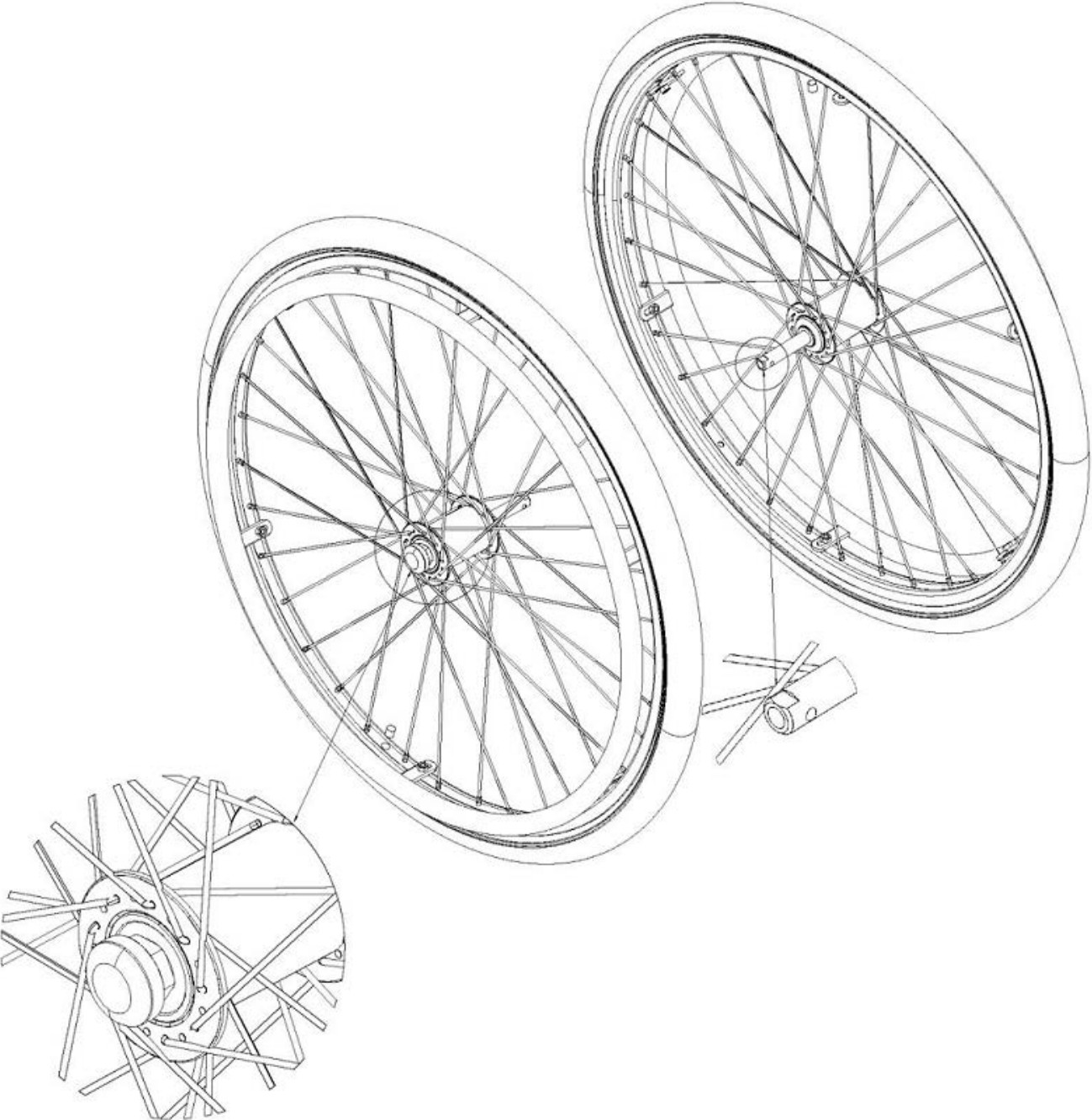
Adjustment: Quick-Release Axle



19 mm



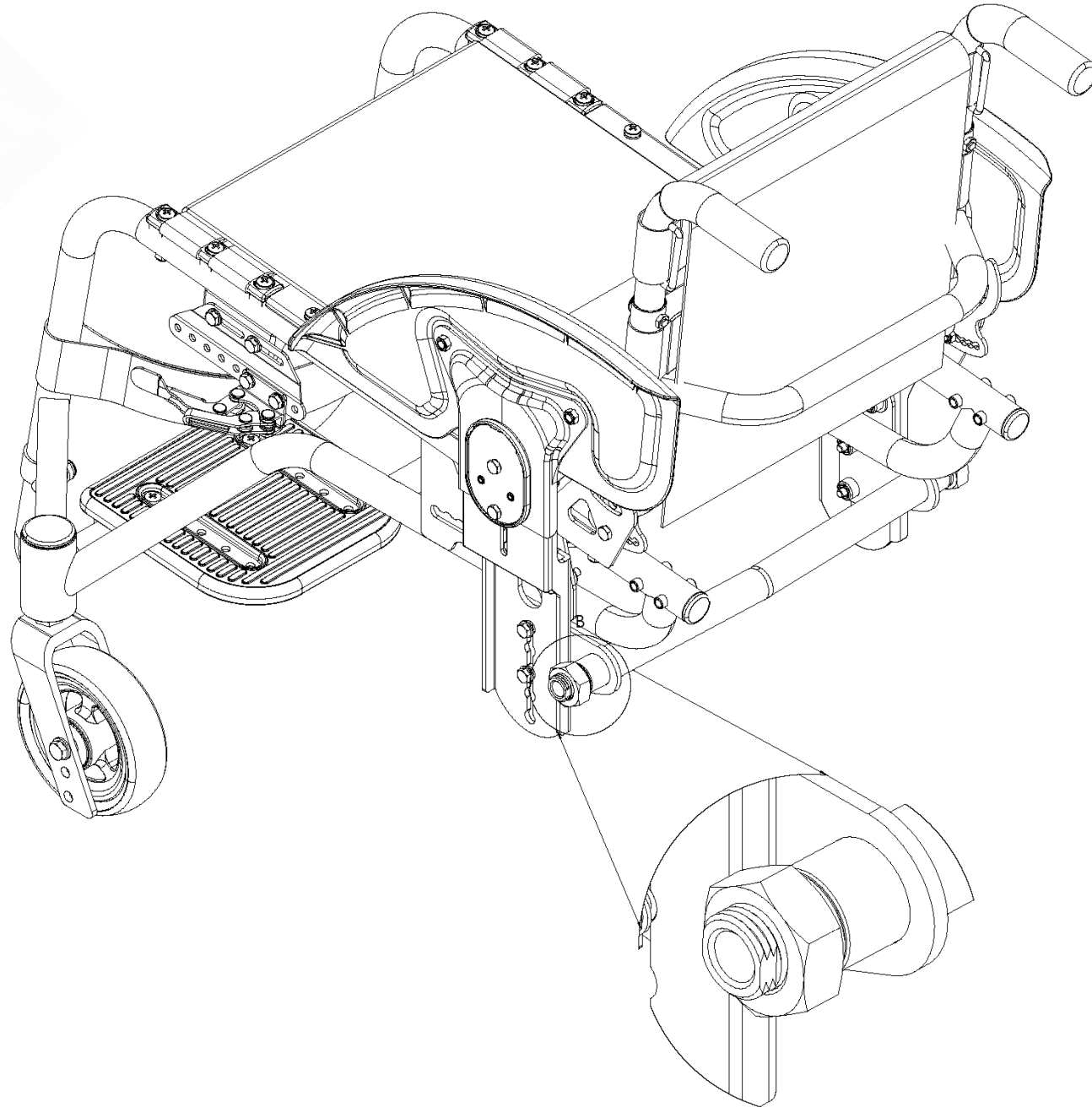
10 mm



Adjustment: Axle Receiver



30 mm



Adjustment: Rear Wheel Push Rim



8 mm

