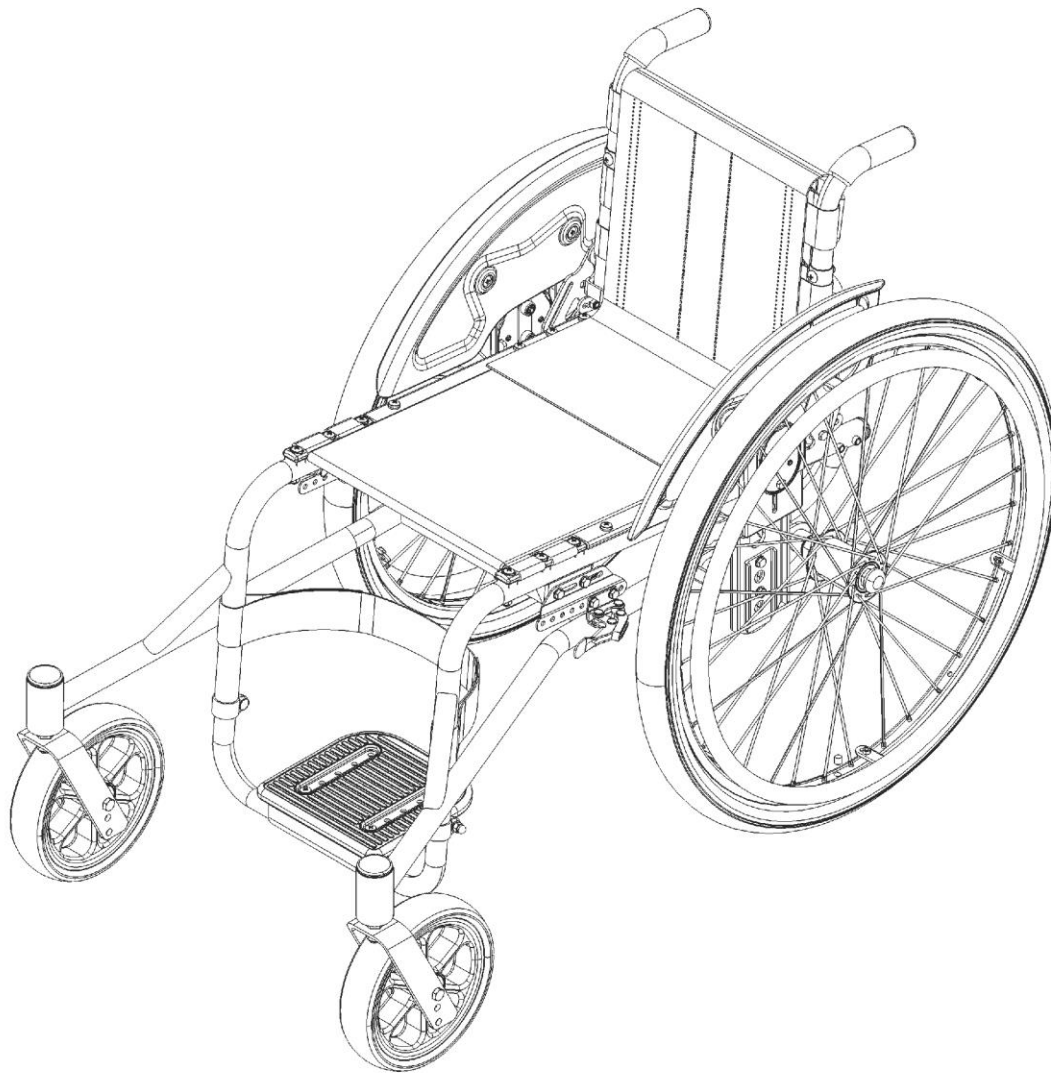


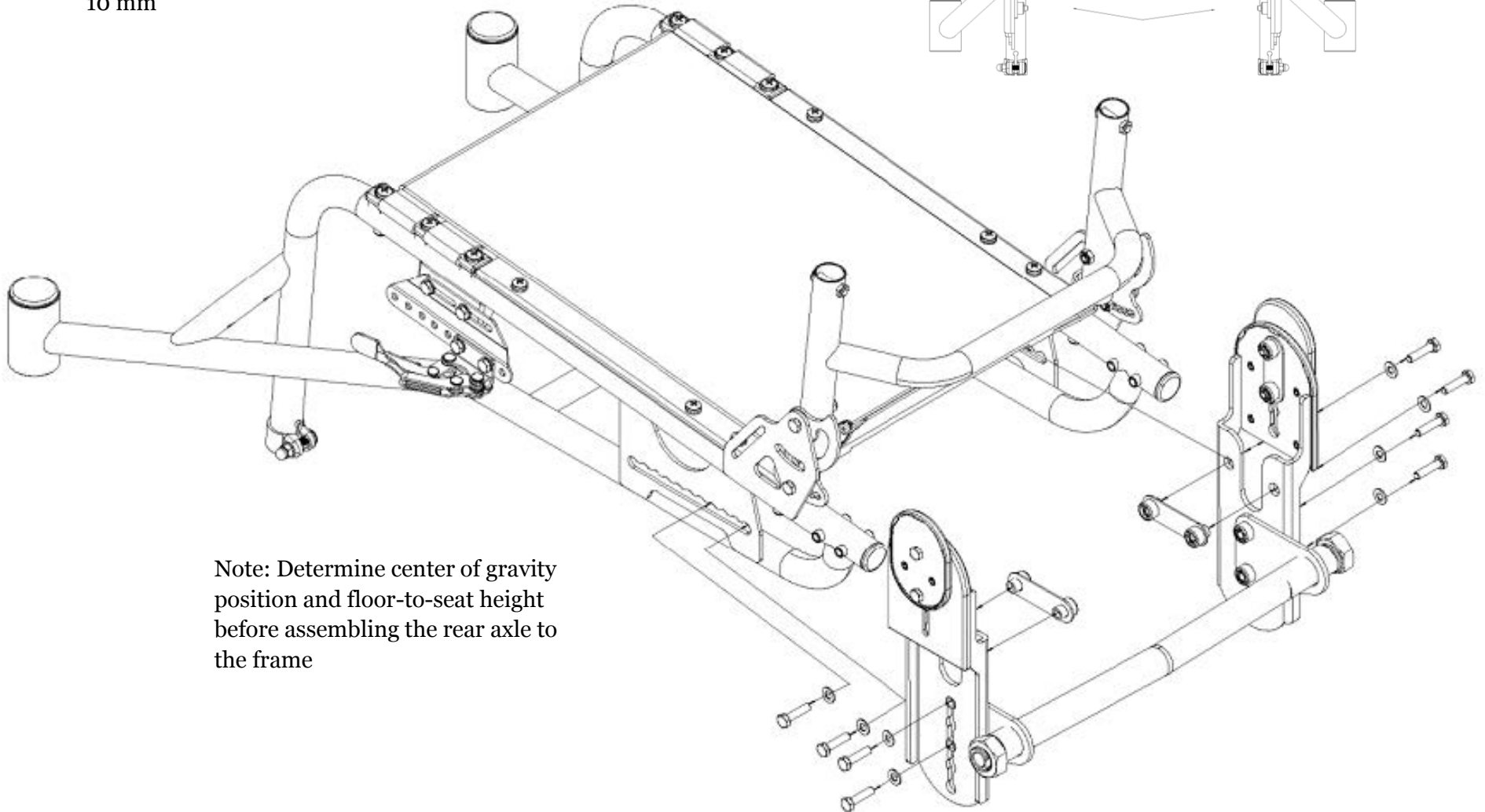
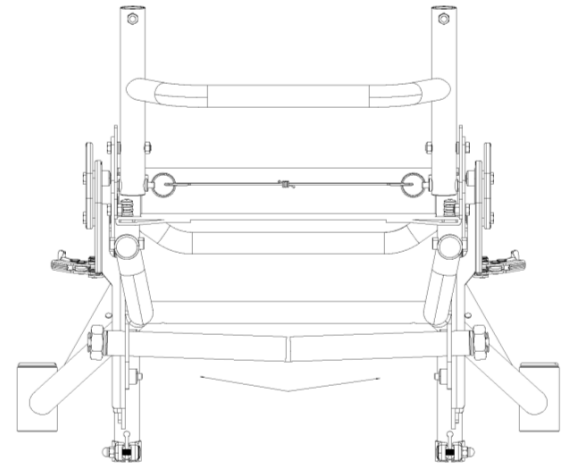
All-Terrain Wheelchair Assembly and Adjustment Manual





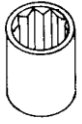
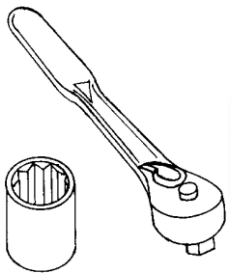
10 mm

Assembly: Rear Axle

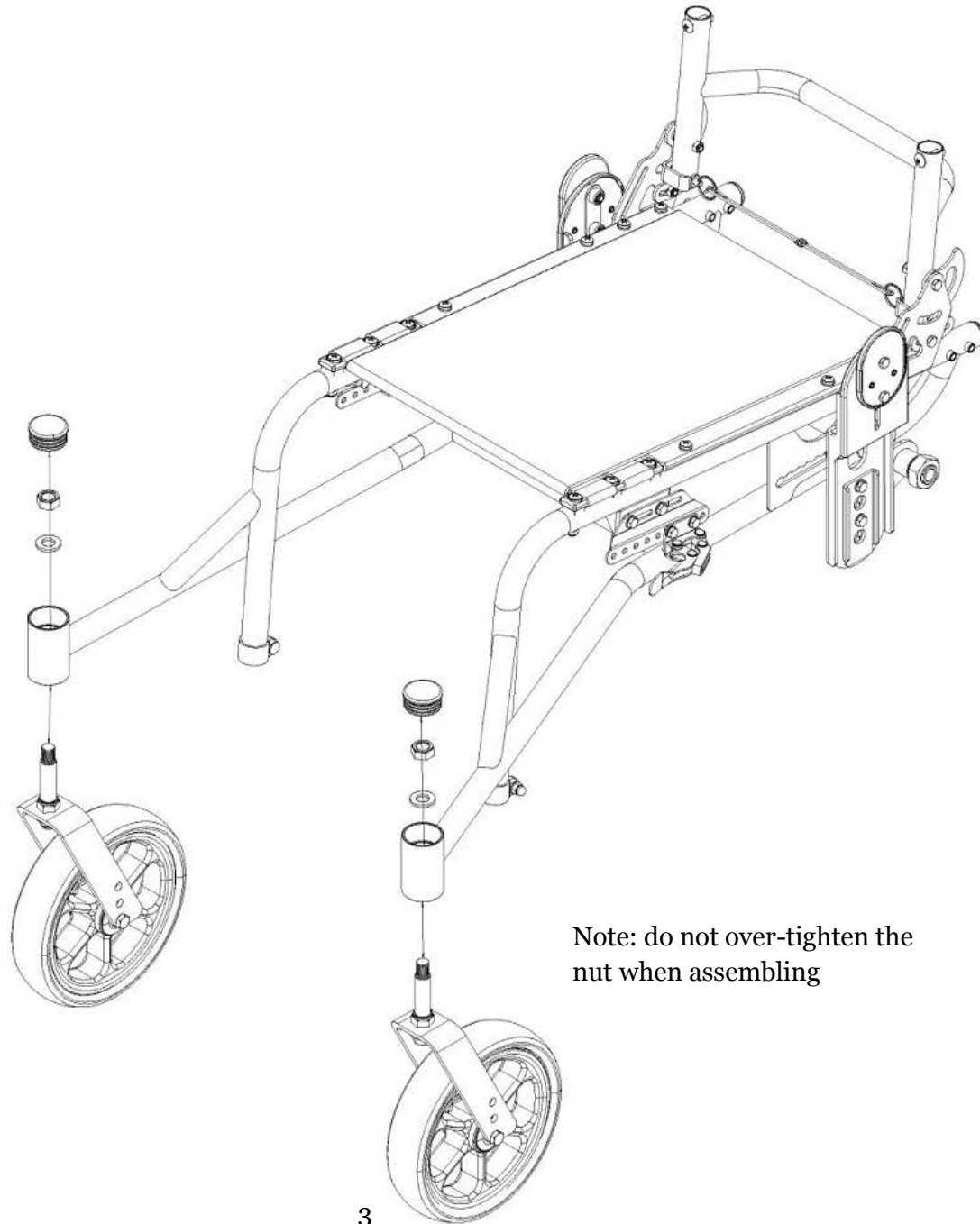


Note: Determine center of gravity position and floor-to-seat height before assembling the rear axle to the frame

Assembly: Front Castor Wheels

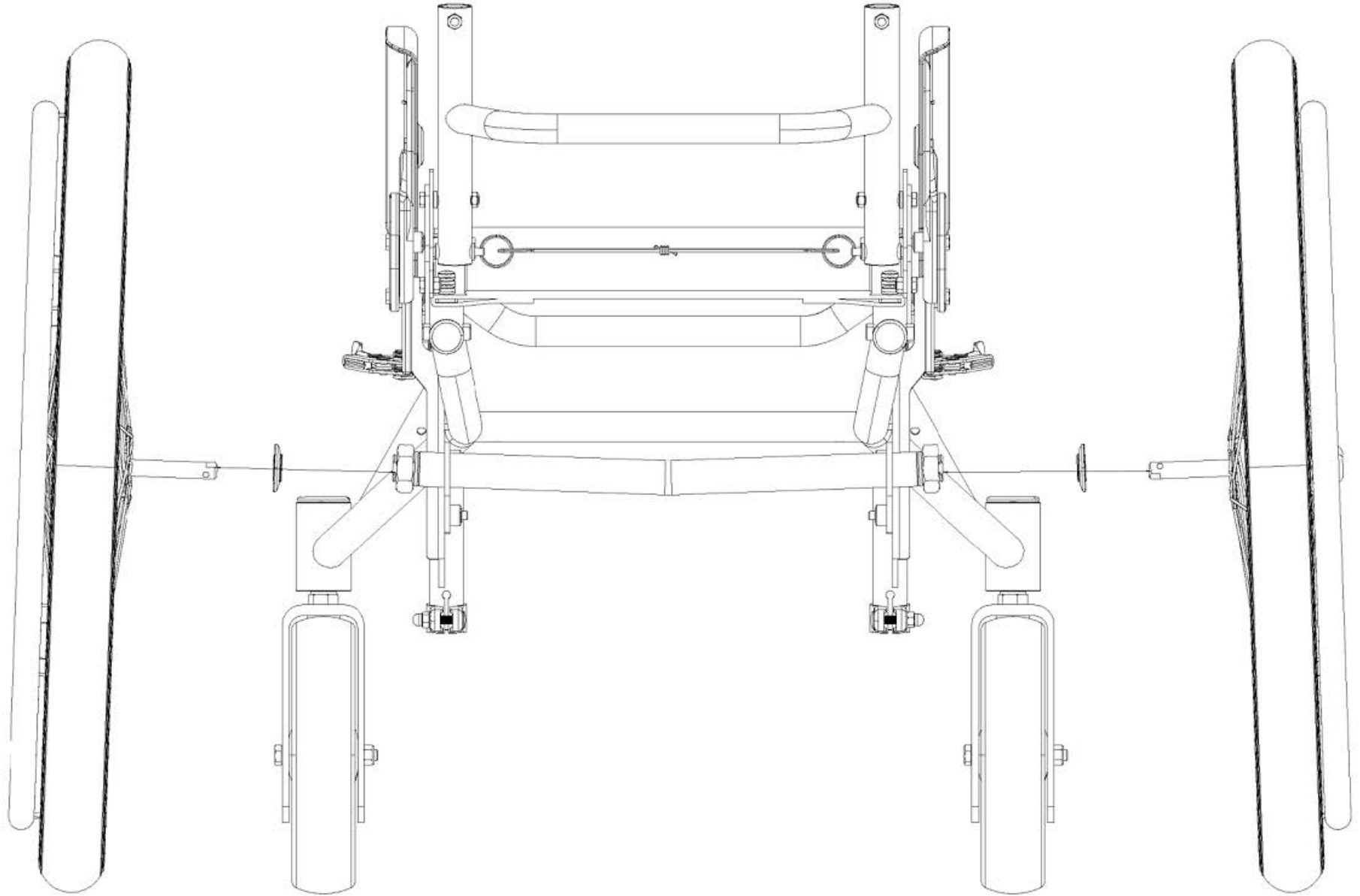


19 mm

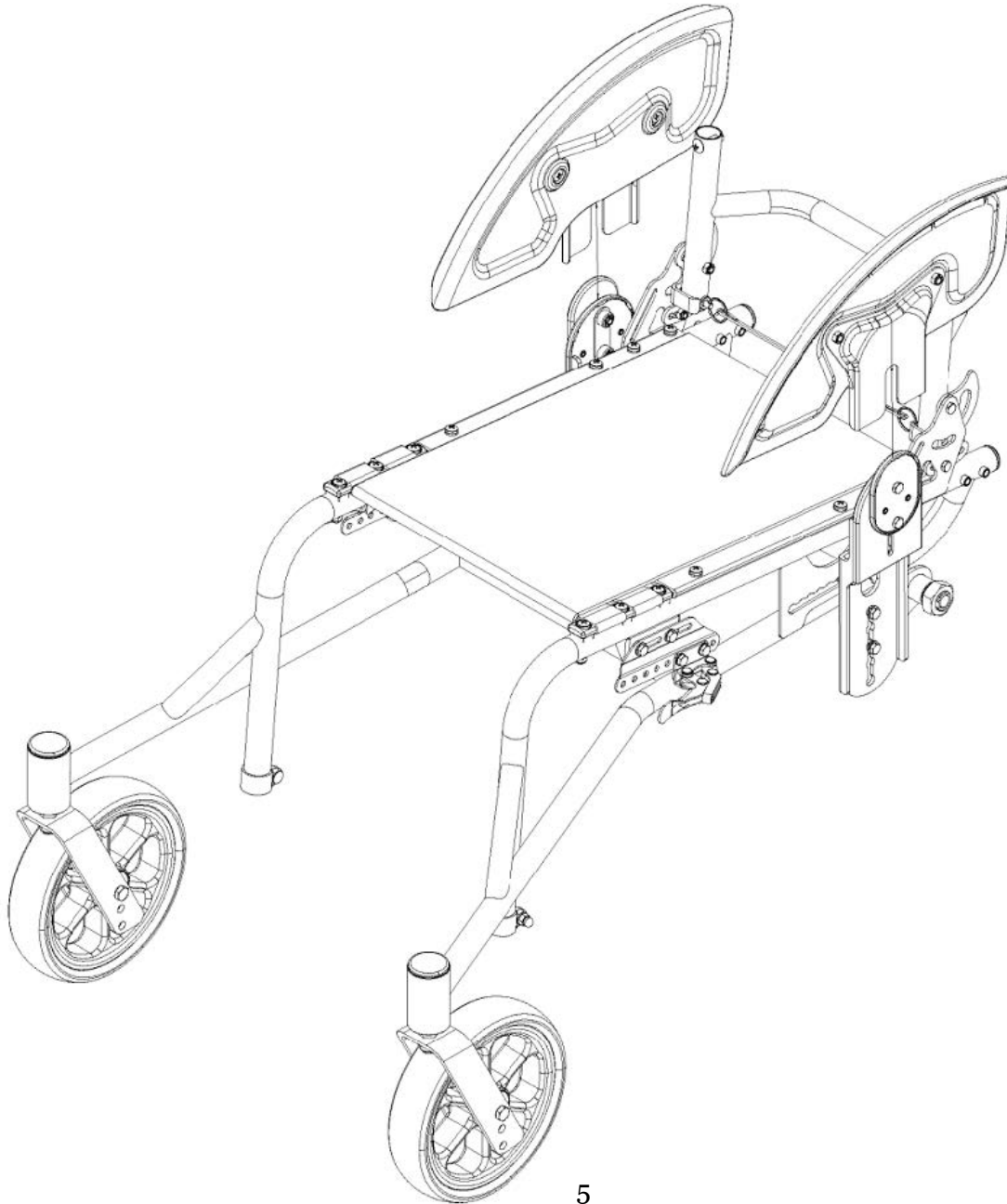


Note: do not over-tighten the nut when assembling

Assembly: Rear Wheels



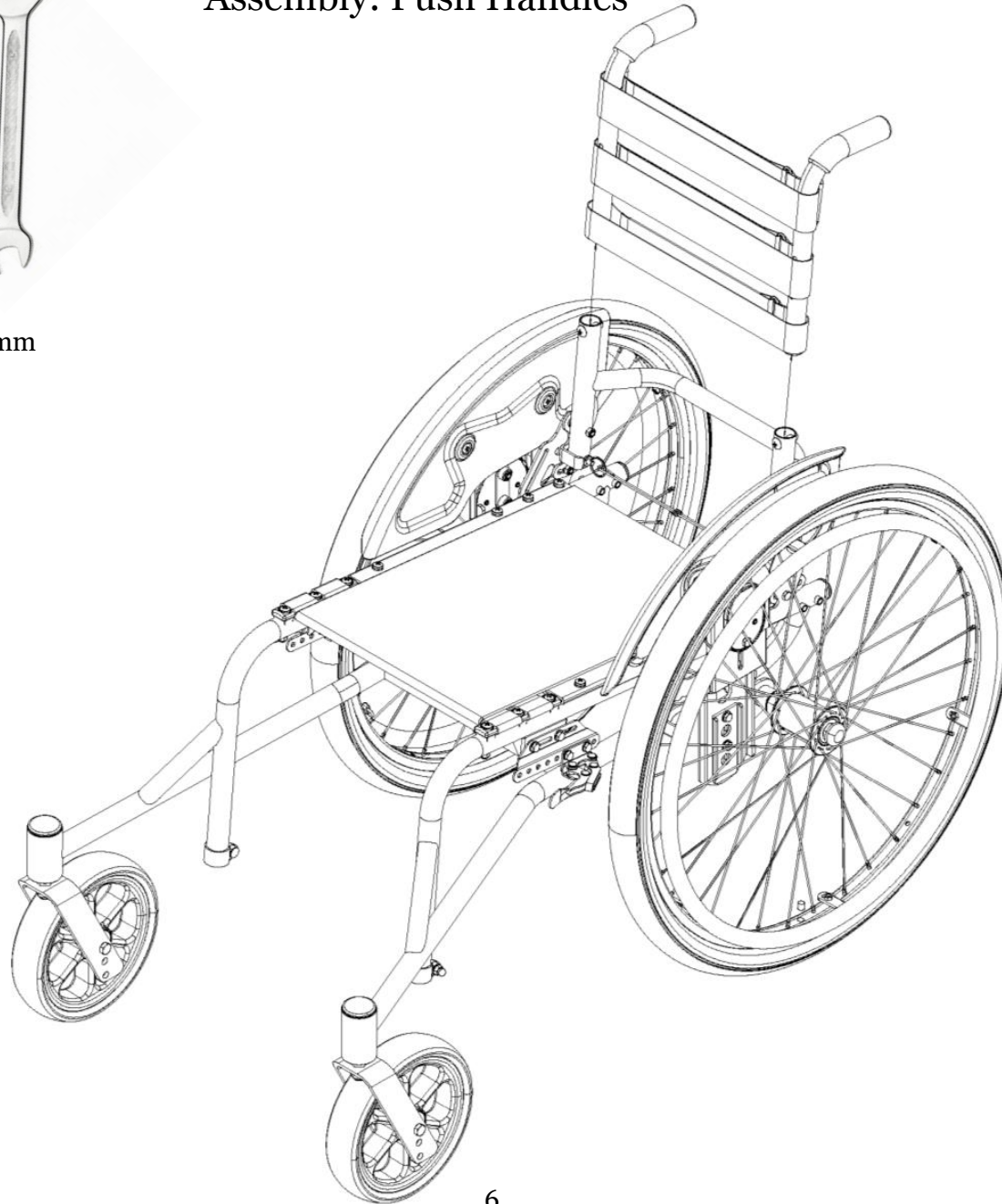
Assembly: Side Guard



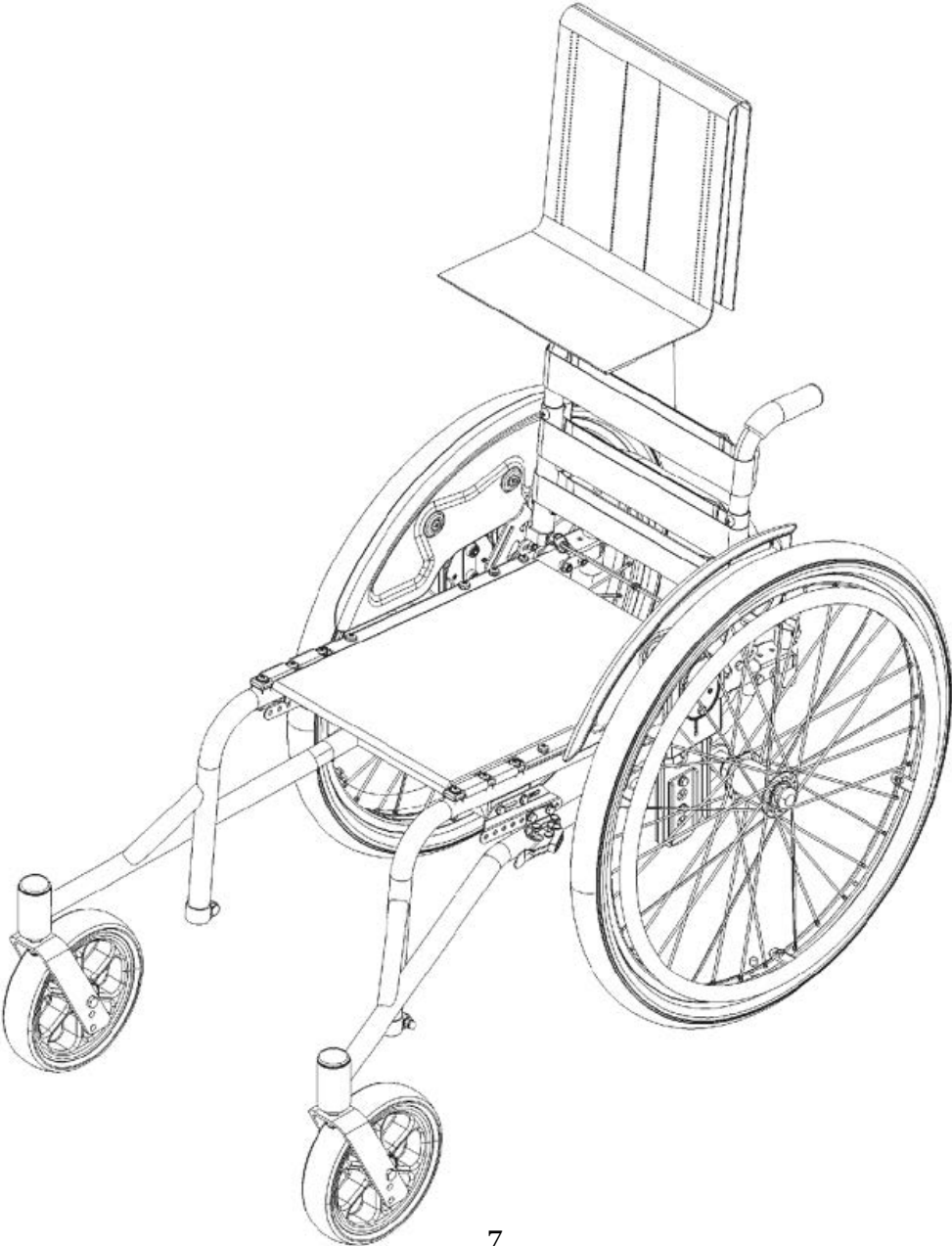


10 mm

Assembly: Push Handles



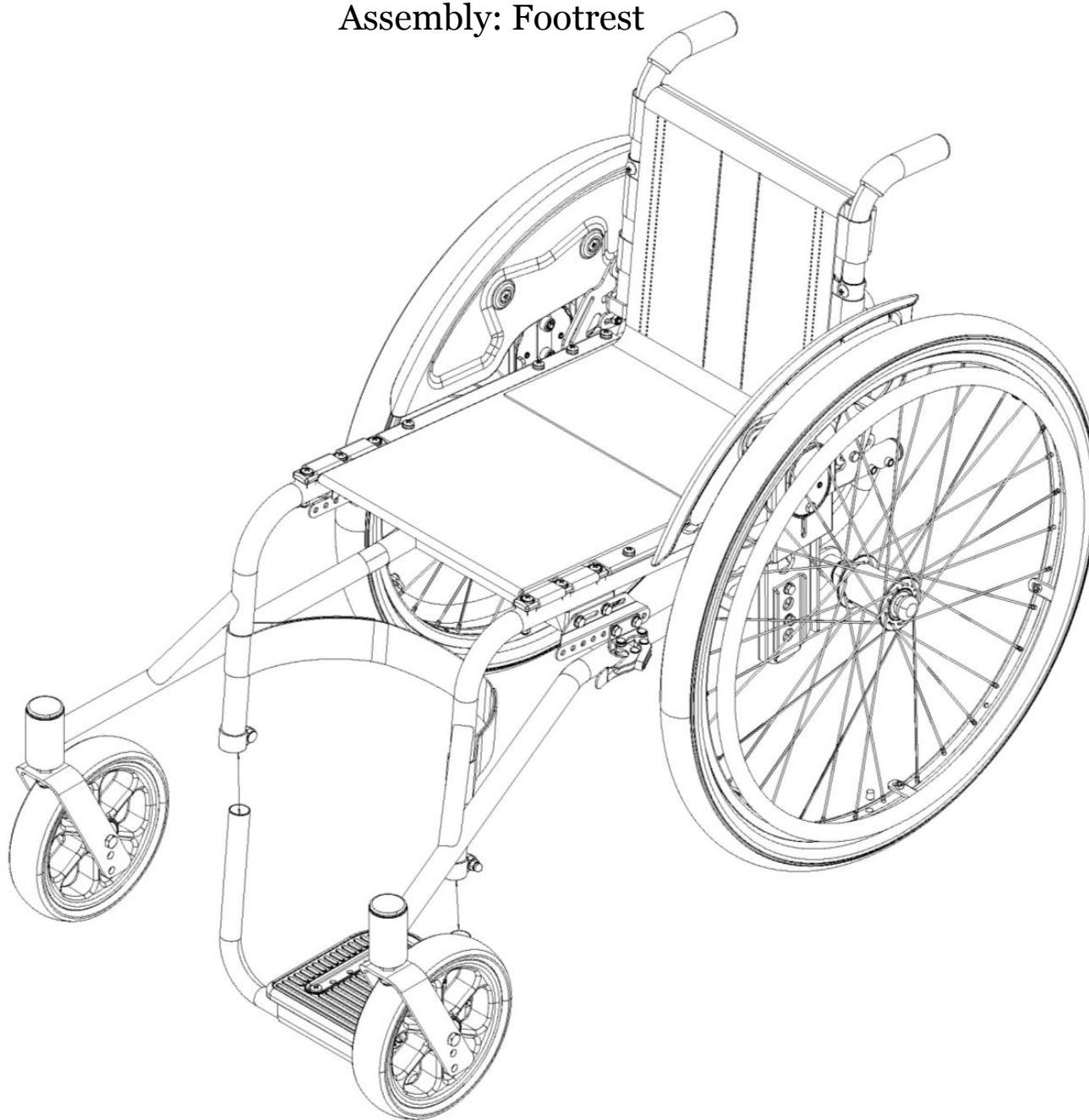
Assembly: Backrest Cover



Assembly: Footrest



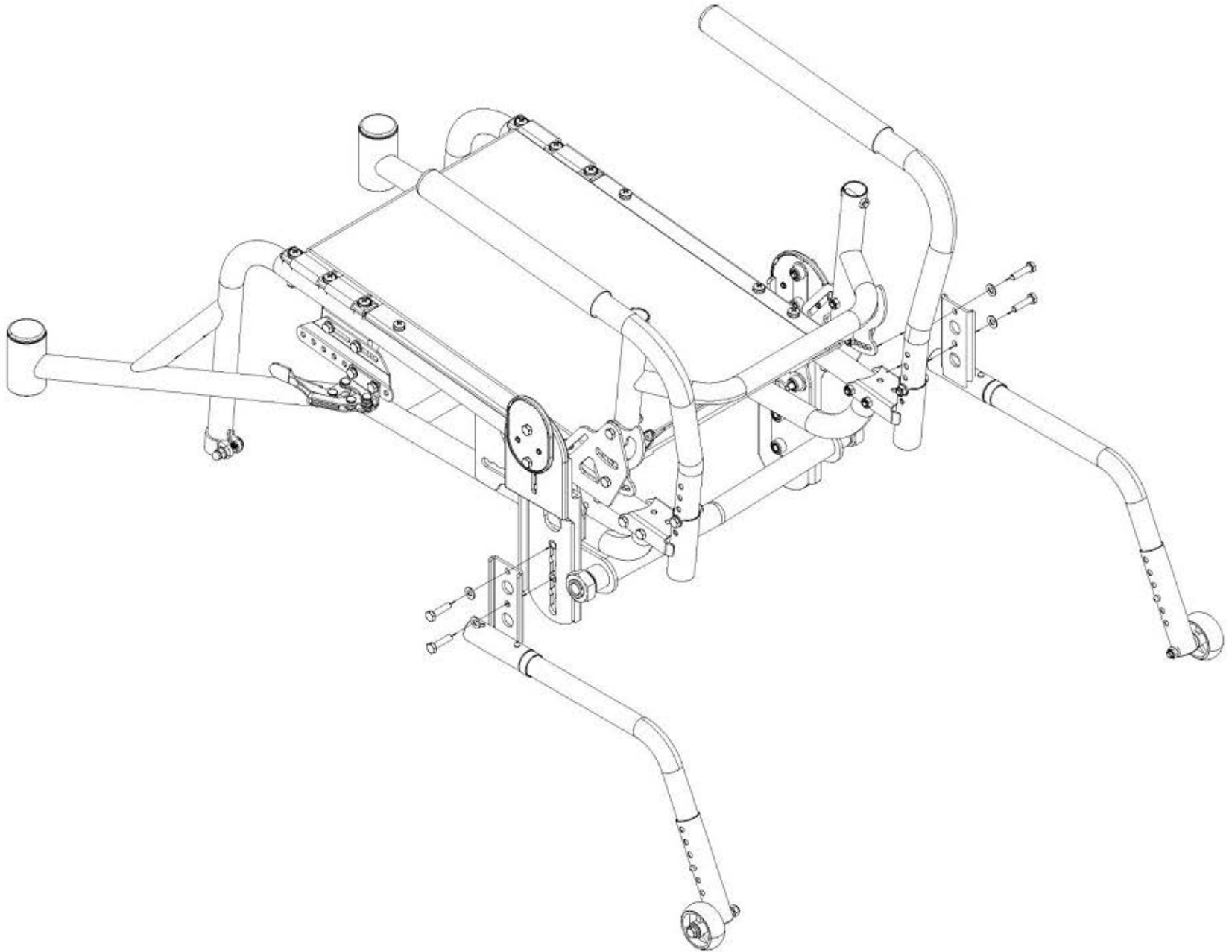
2 x 10 mm



Optional Assembly: Rear Axle with Anti Tip Bar



2 x 10 mm

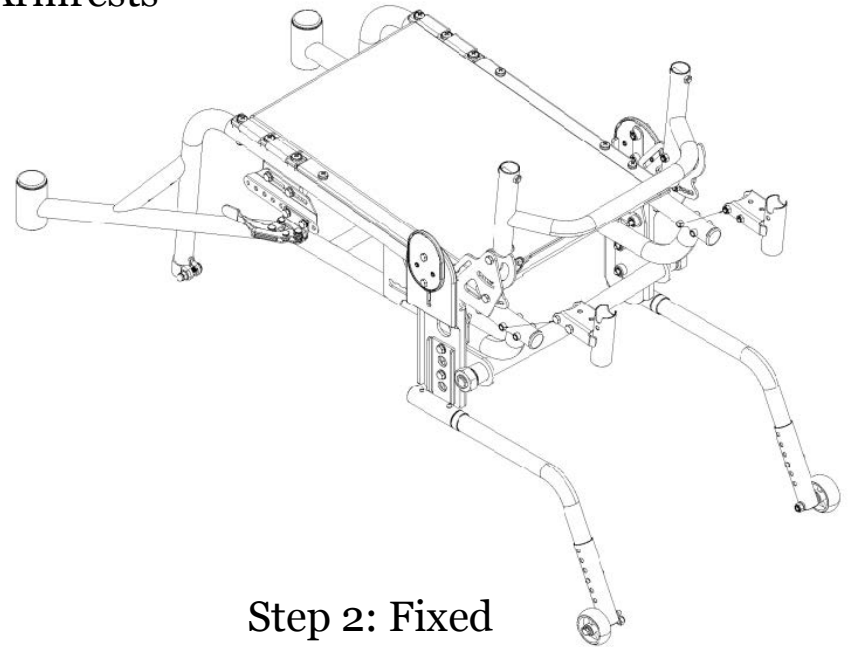


Optional Assembly: Armrests

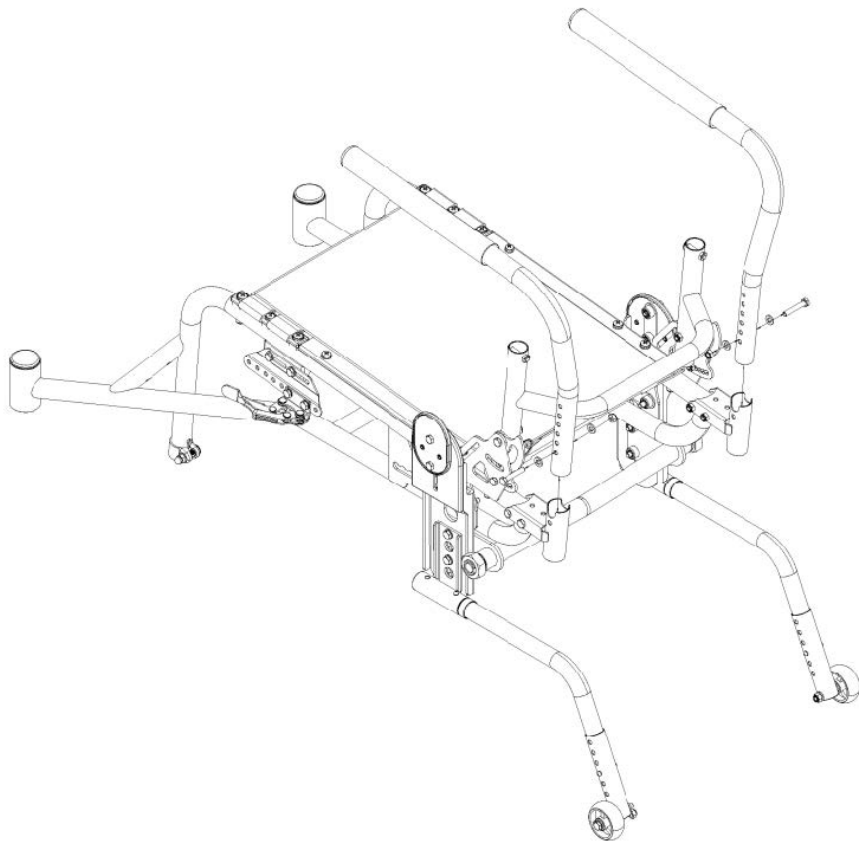
Step 1



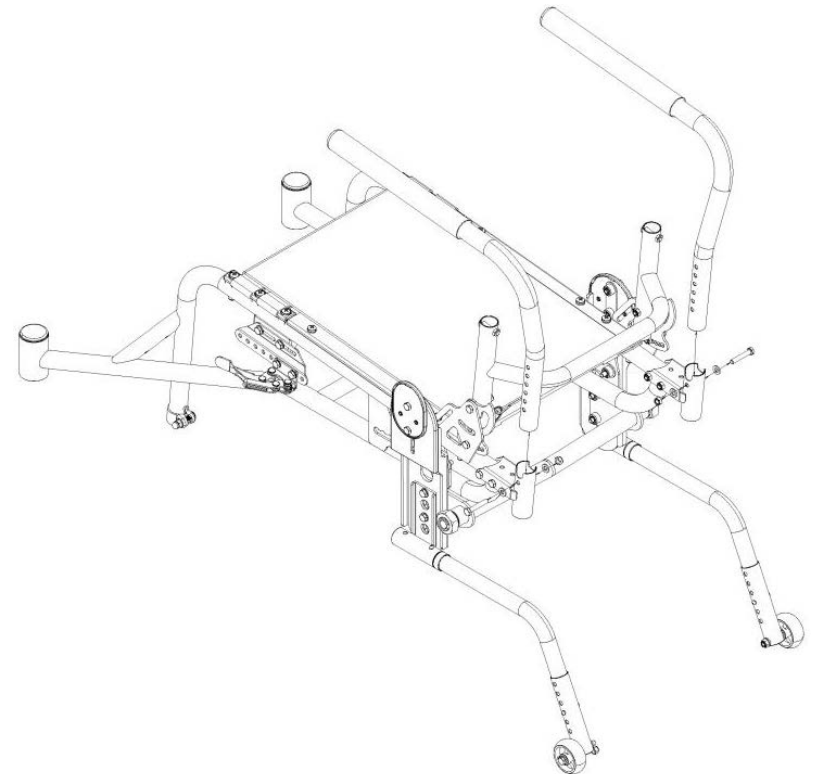
2 x 10 mm



Step 2: Removable



Step 2: Fixed

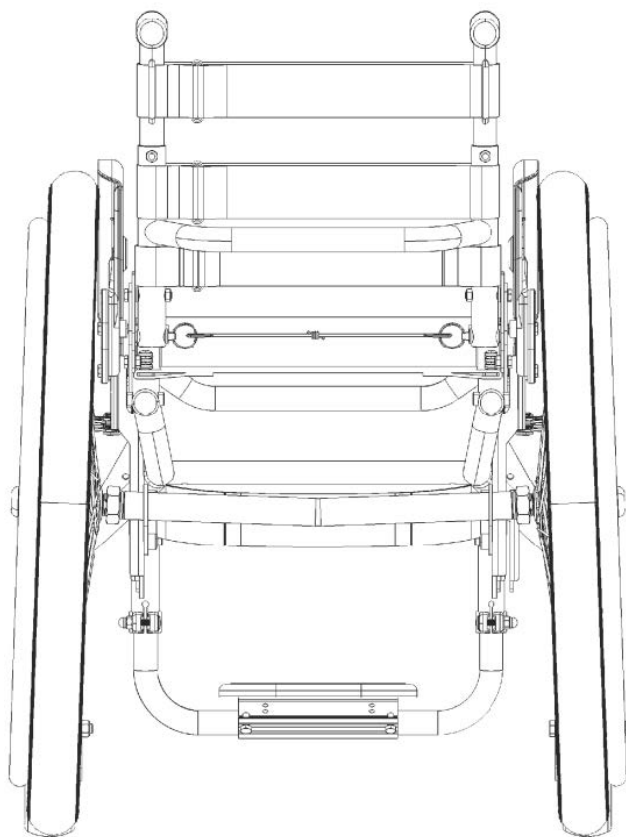


Adjustment: Backrest Height

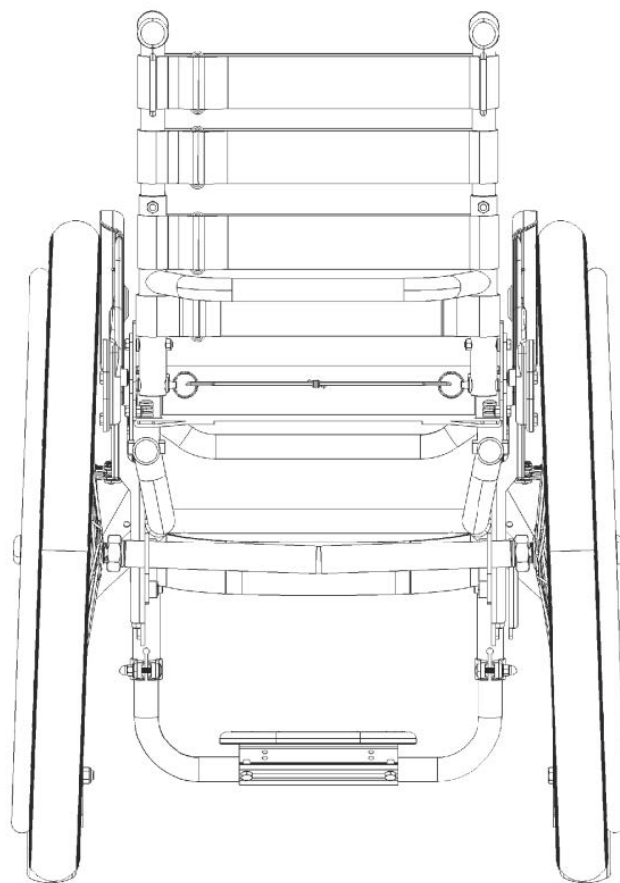


10 mm

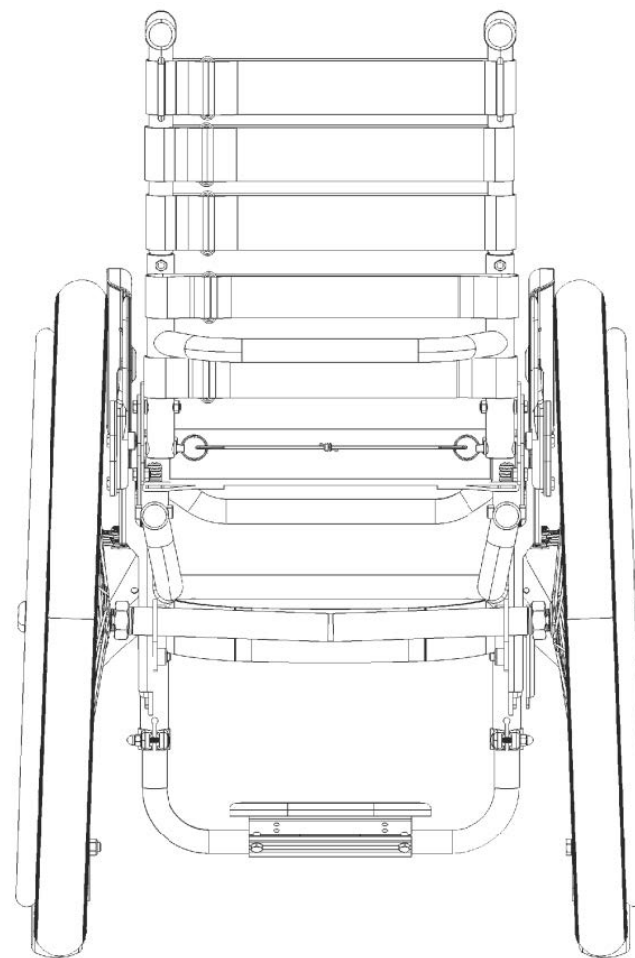
Low



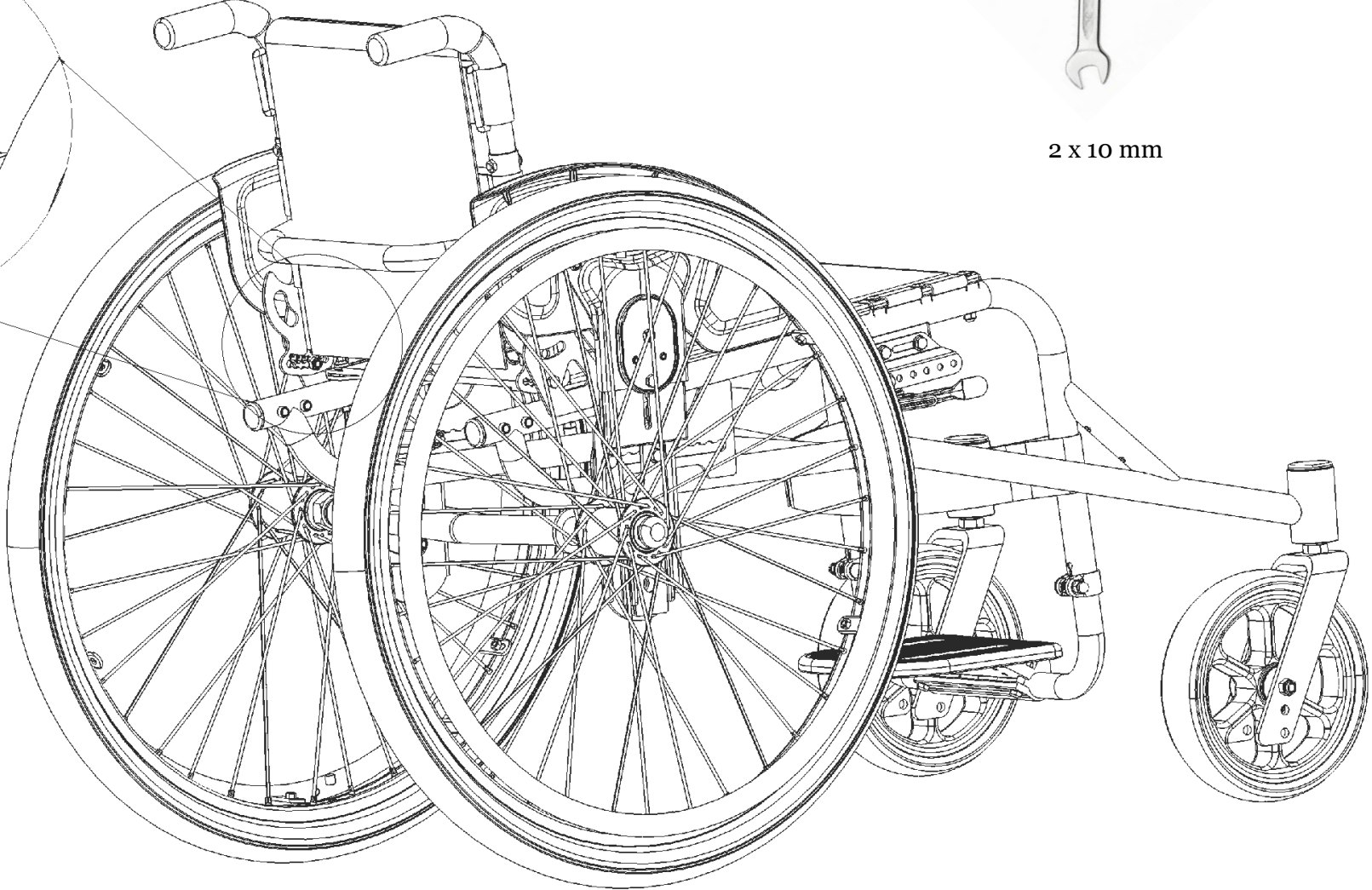
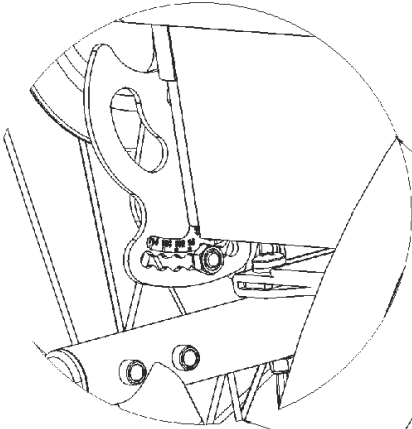
Medium



High



Adjustment: Backrest Angle



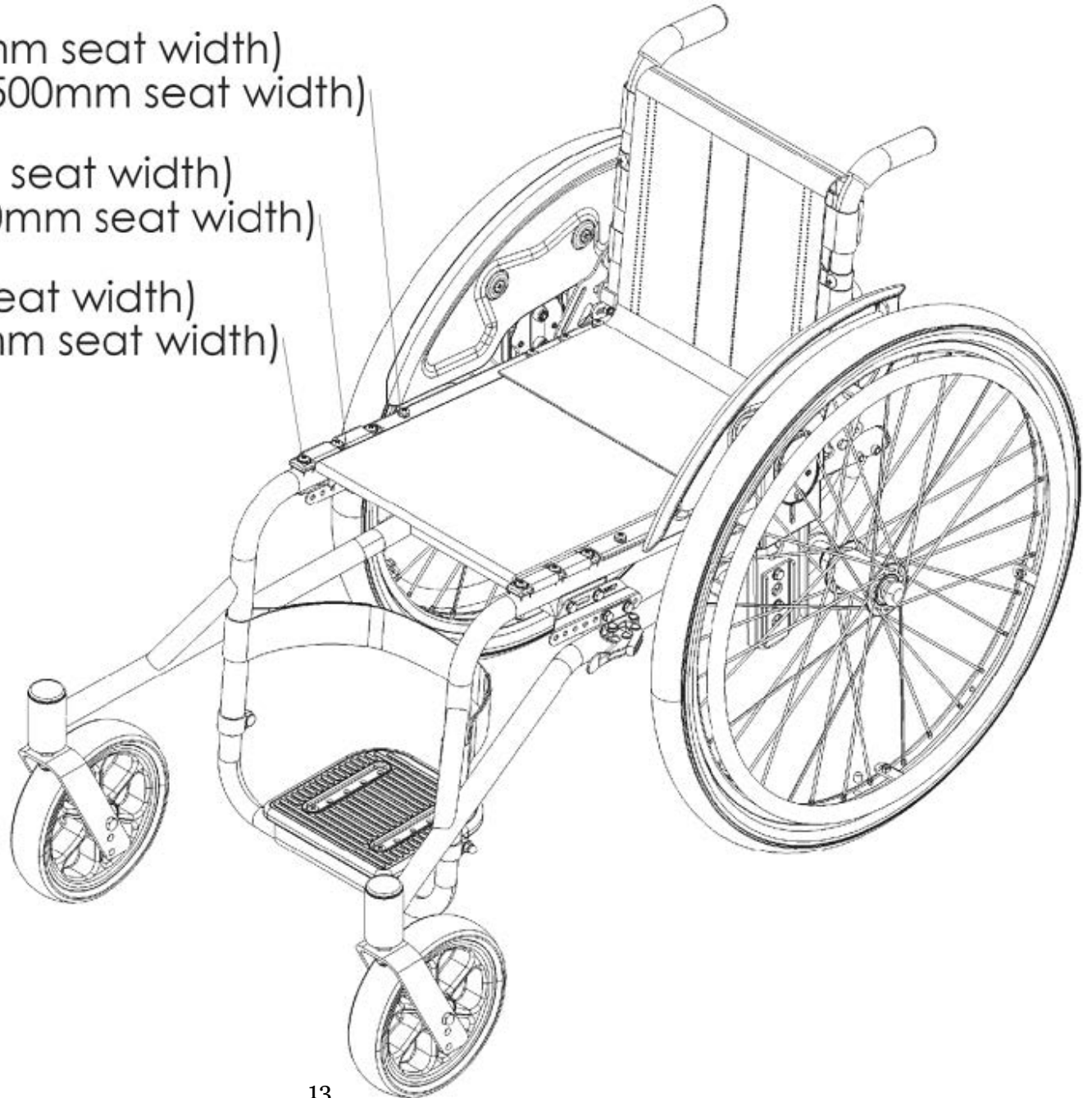
2 x 10 mm

Adjustment: Seat Depth

300mm (300mm seat width)
350mm (350-500mm seat width)

350mm (300mm seat width)
400mm (350-500mm seat width)

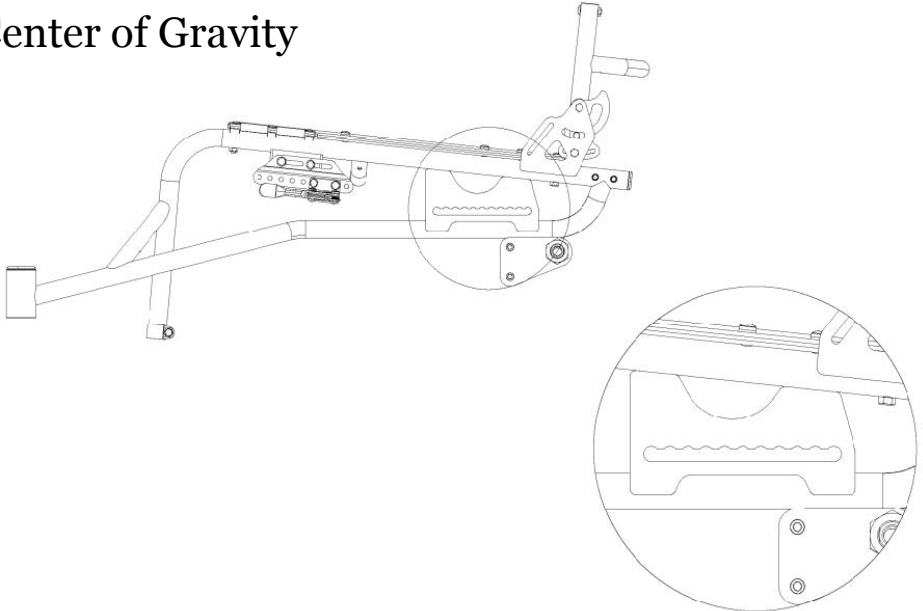
400mm (300mm seat width)
450mm (350-500mm seat width)



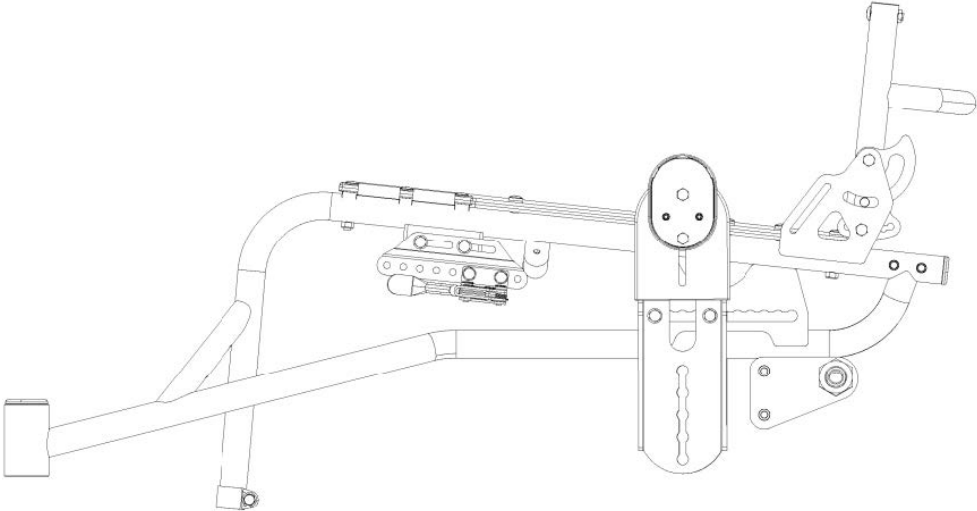
Adjustment: Center of Gravity



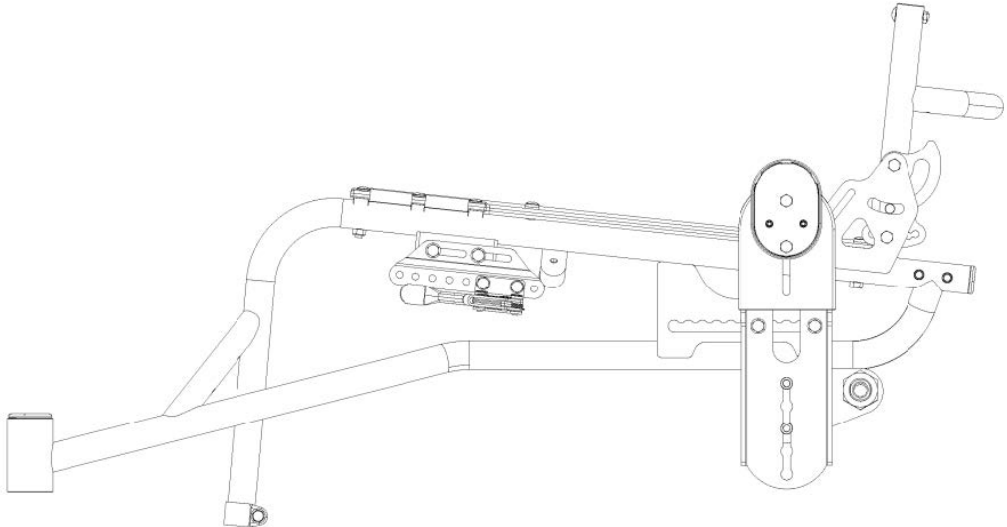
10 mm



Position 1- Active



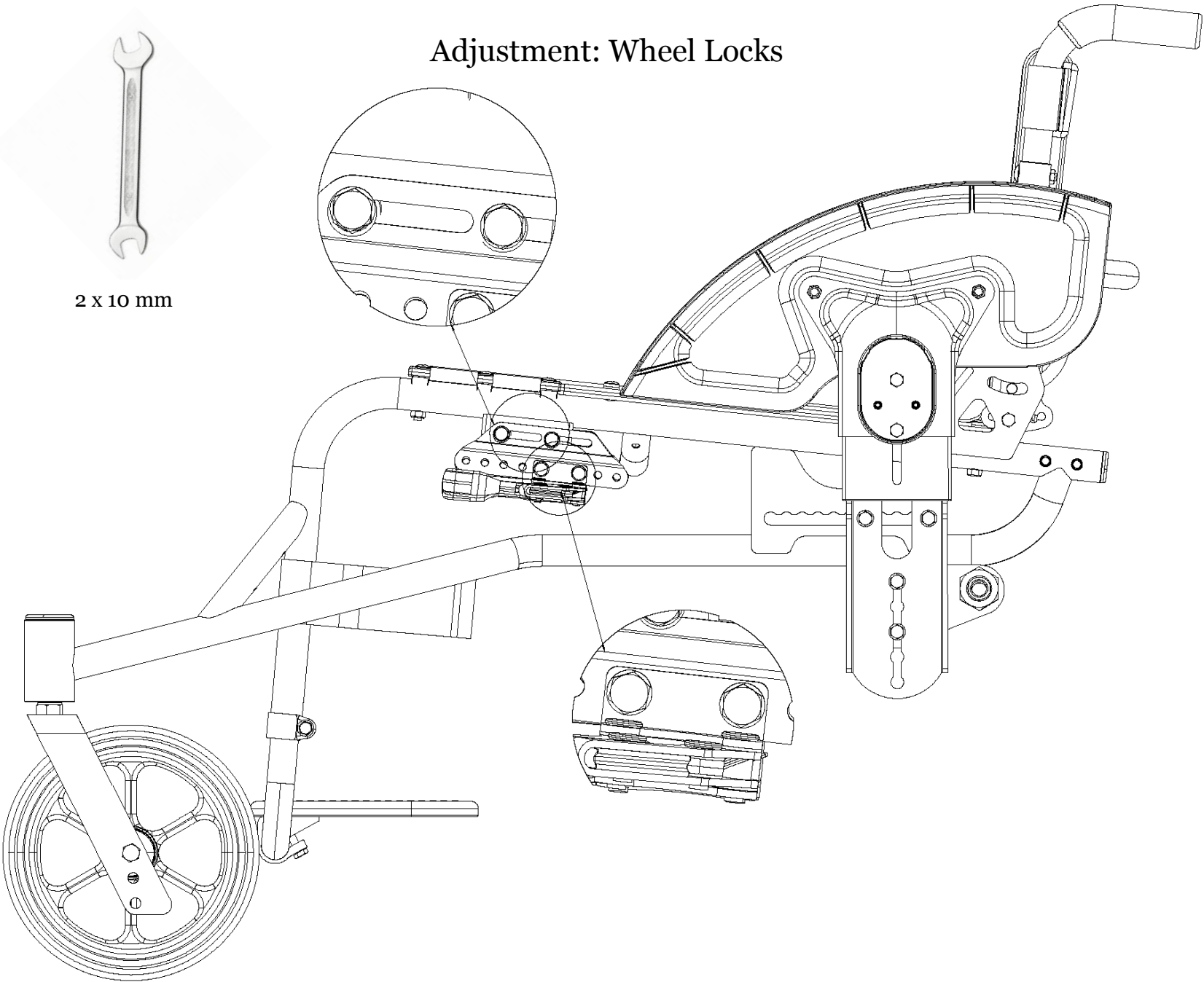
Position 7- Safe



Adjustment: Wheel Locks

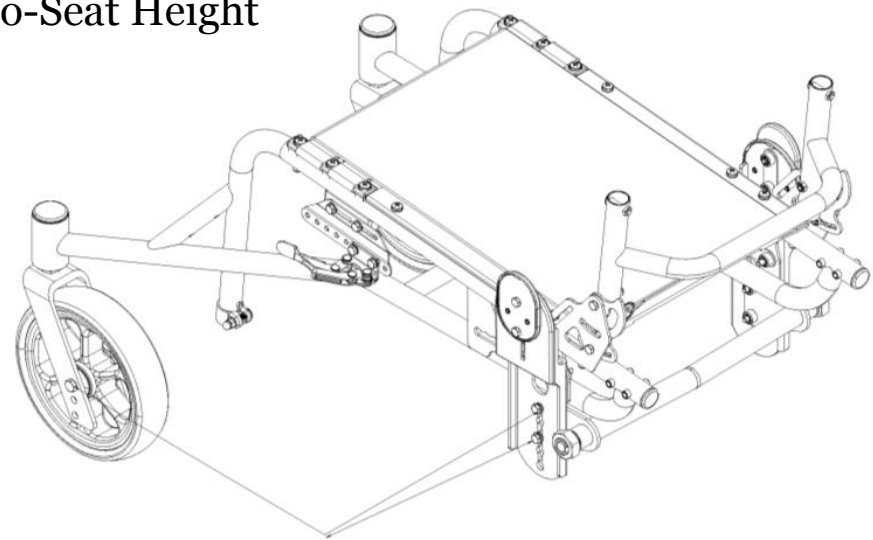


2 x 10 mm



Adjustment: Floor-to-Seat Height

Low

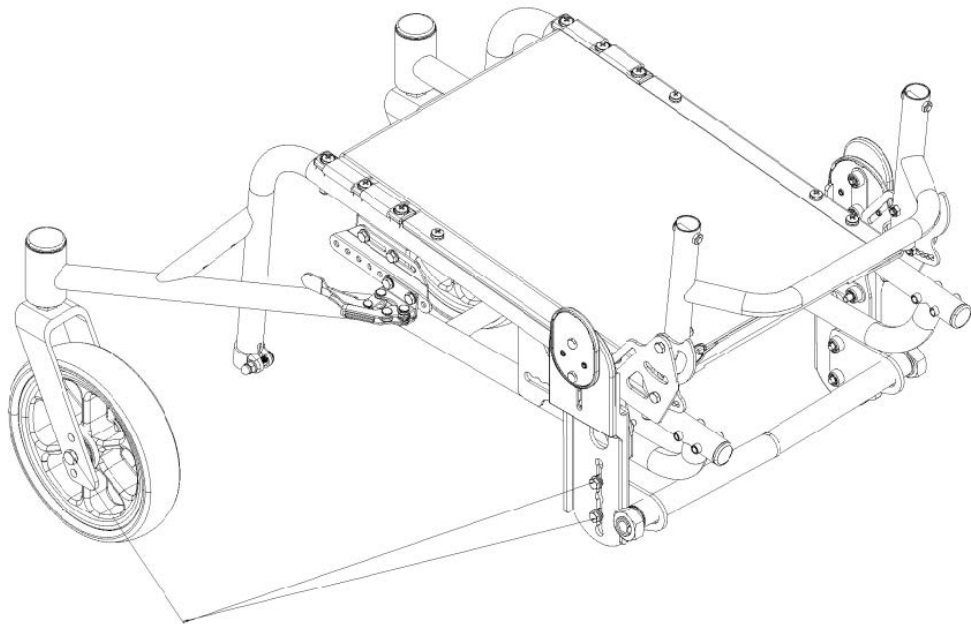


2 x 10 mm

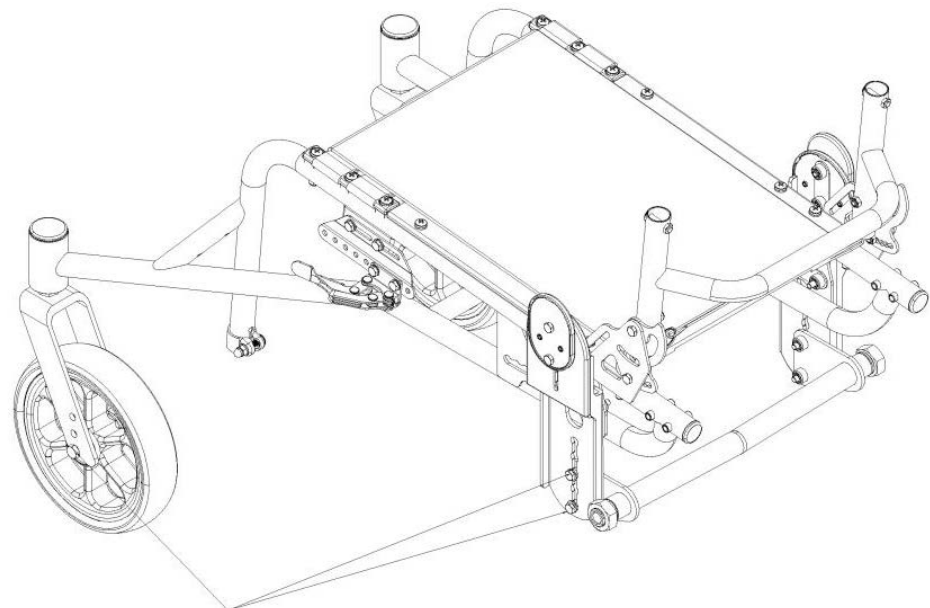


2 x 13 mm

Middle



High



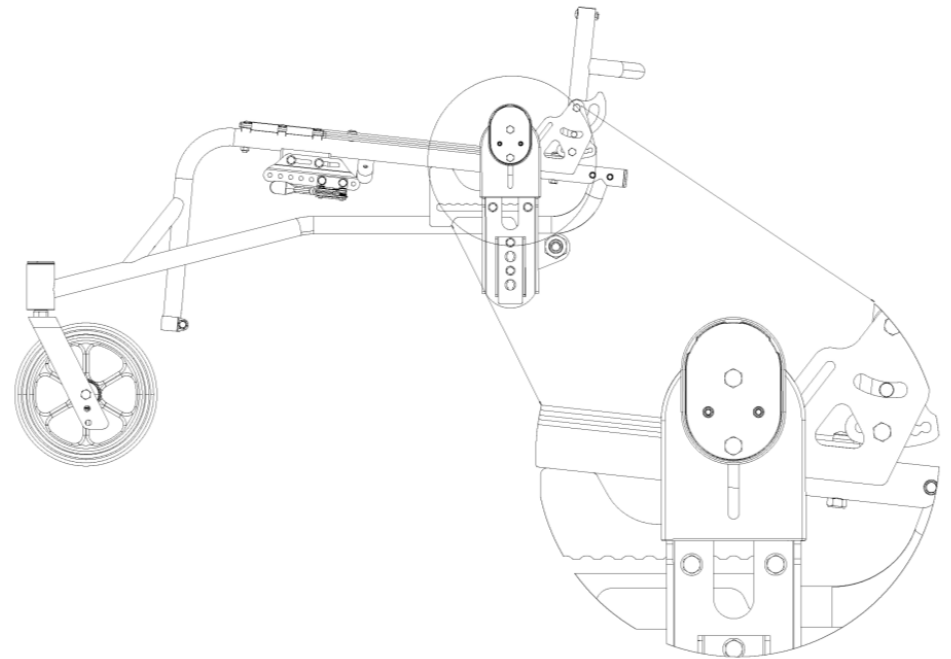
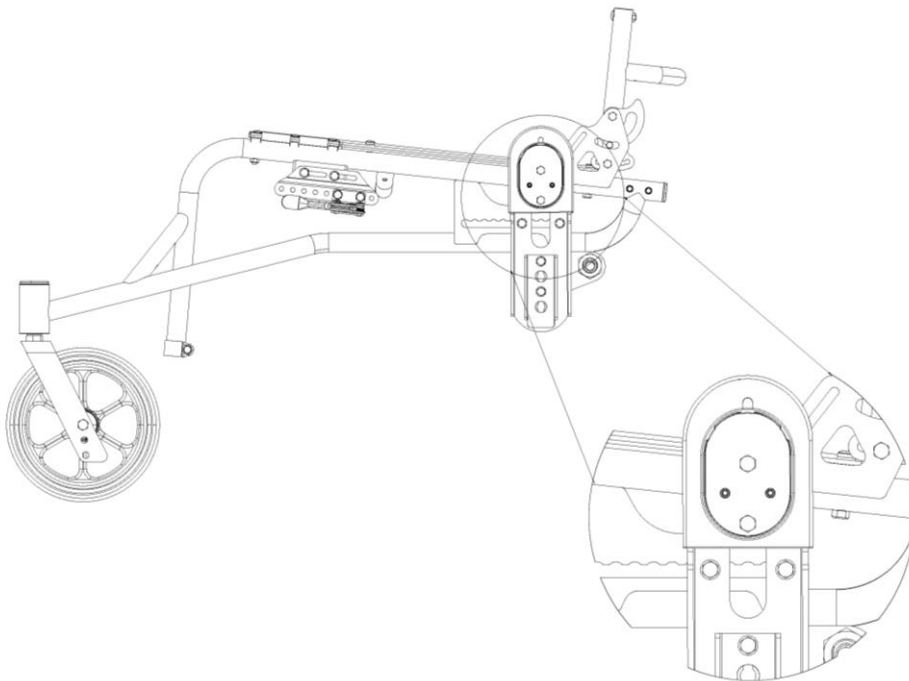
Adjustment: Side Guard Height



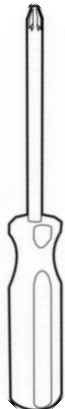
10 mm

Low

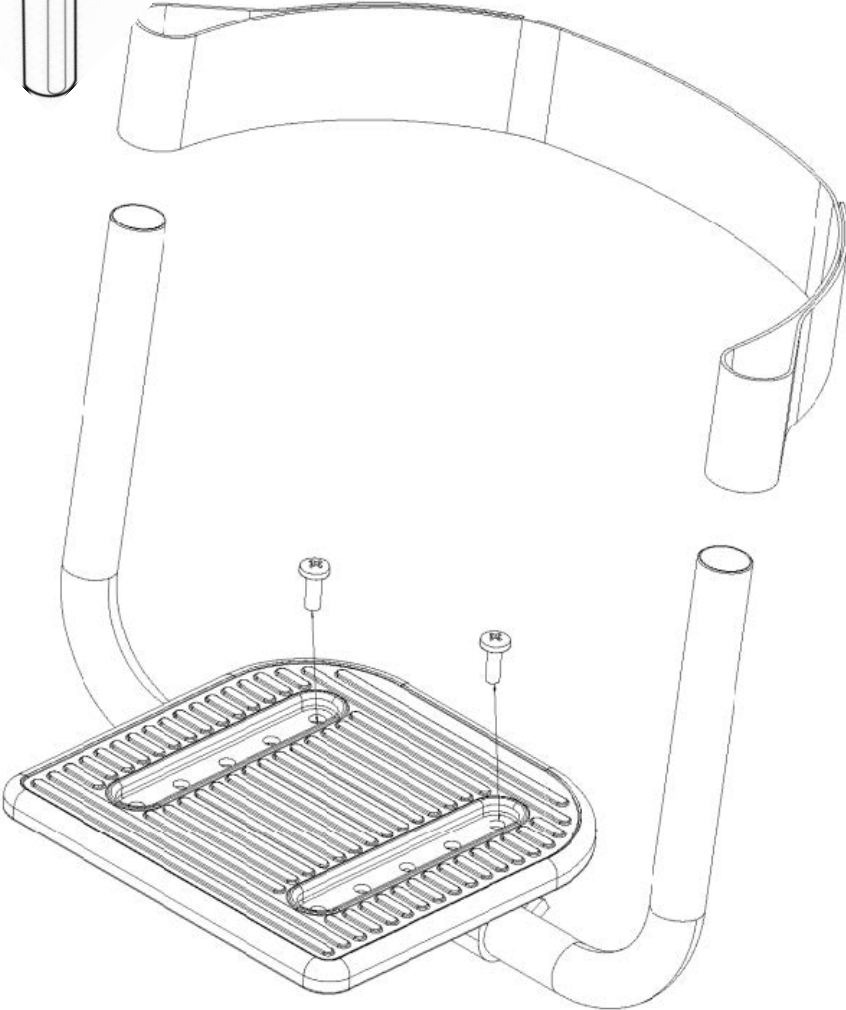
High



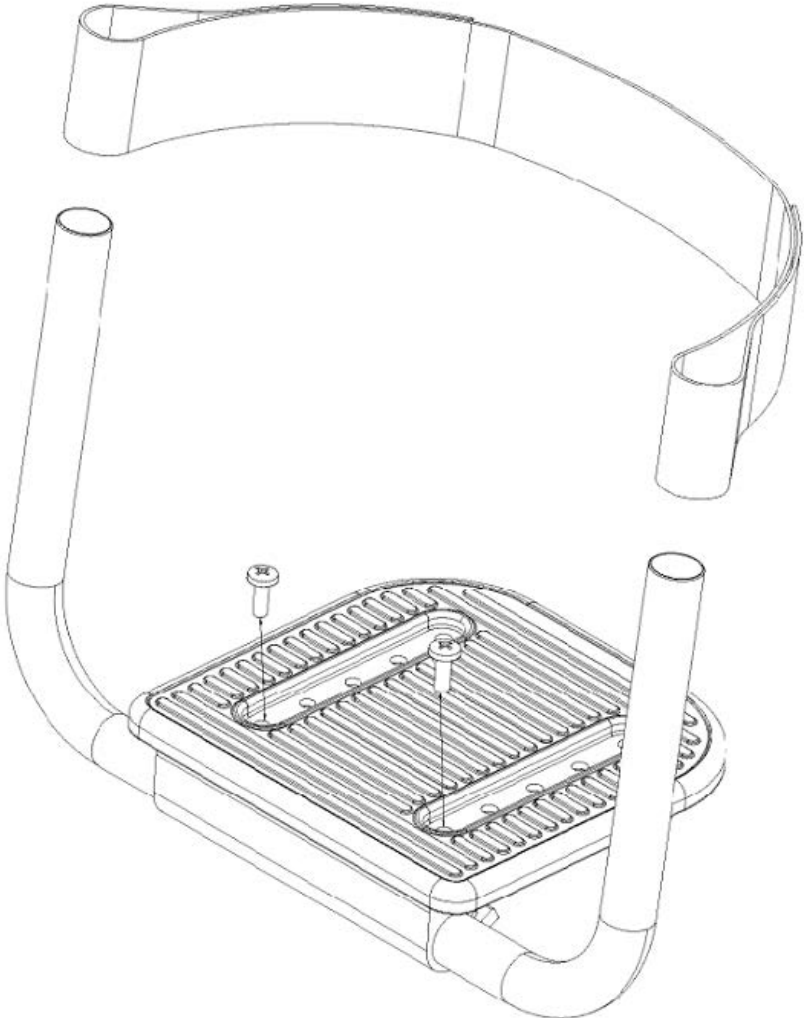
Adjustment: Footrest Position



Forward



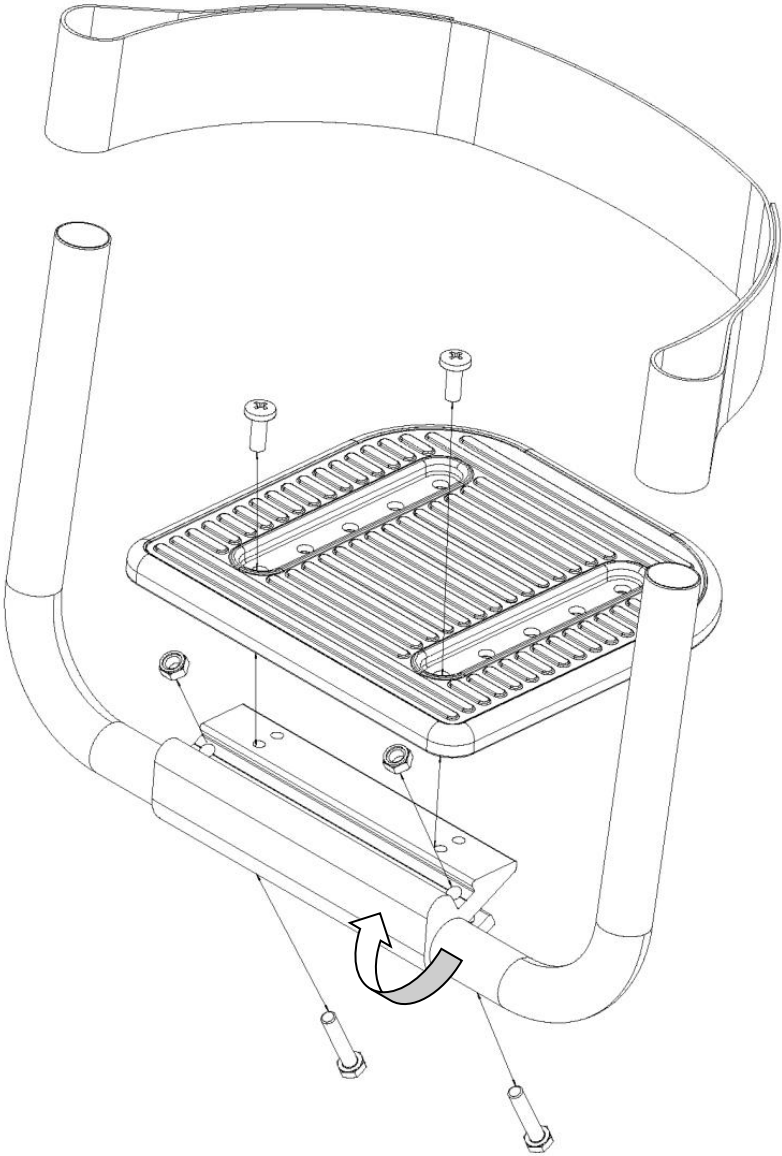
Back



Adjustment: Footrest Angle



10 mm



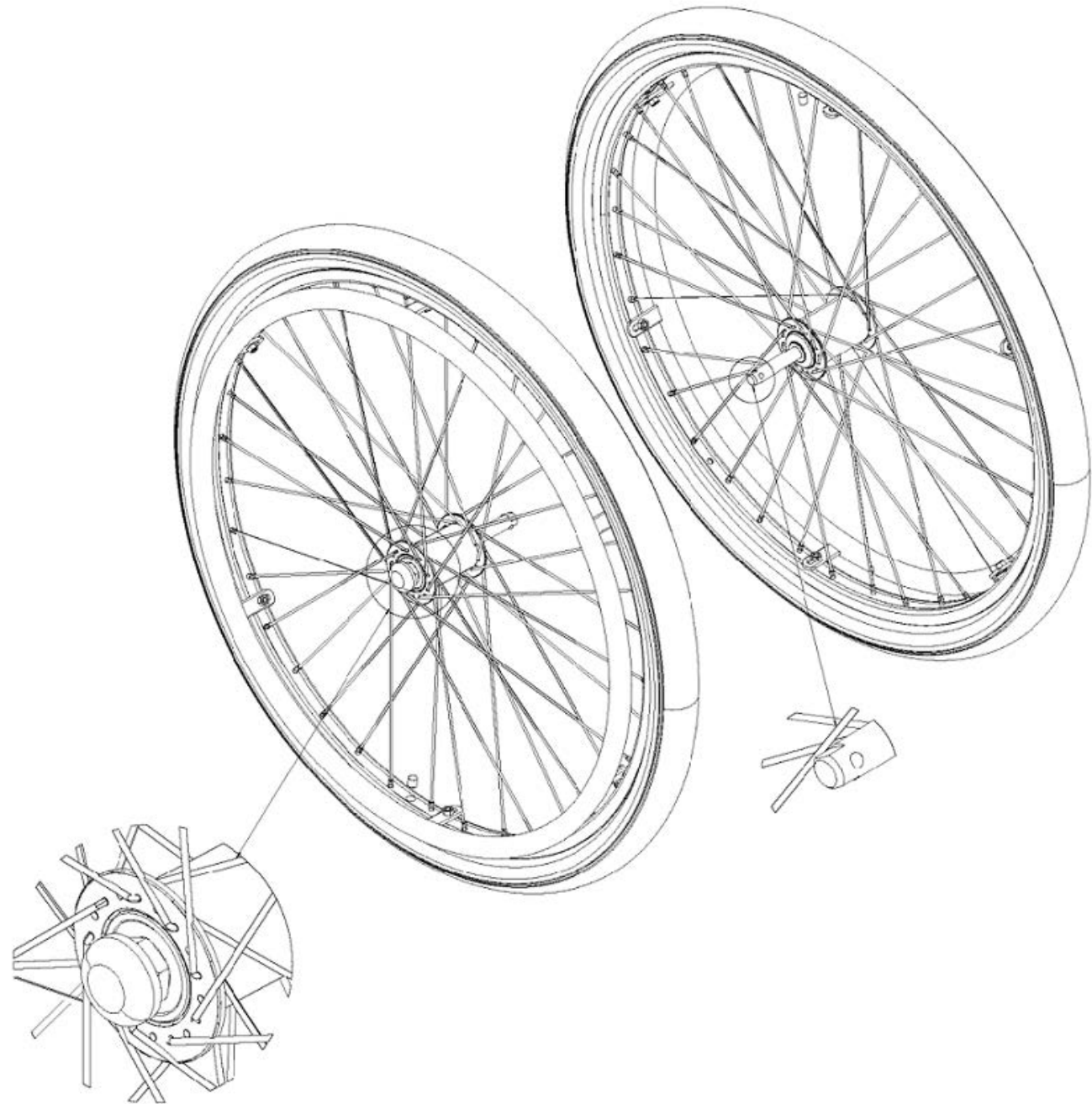
Adjustment: Quick Release Axle



19 mm



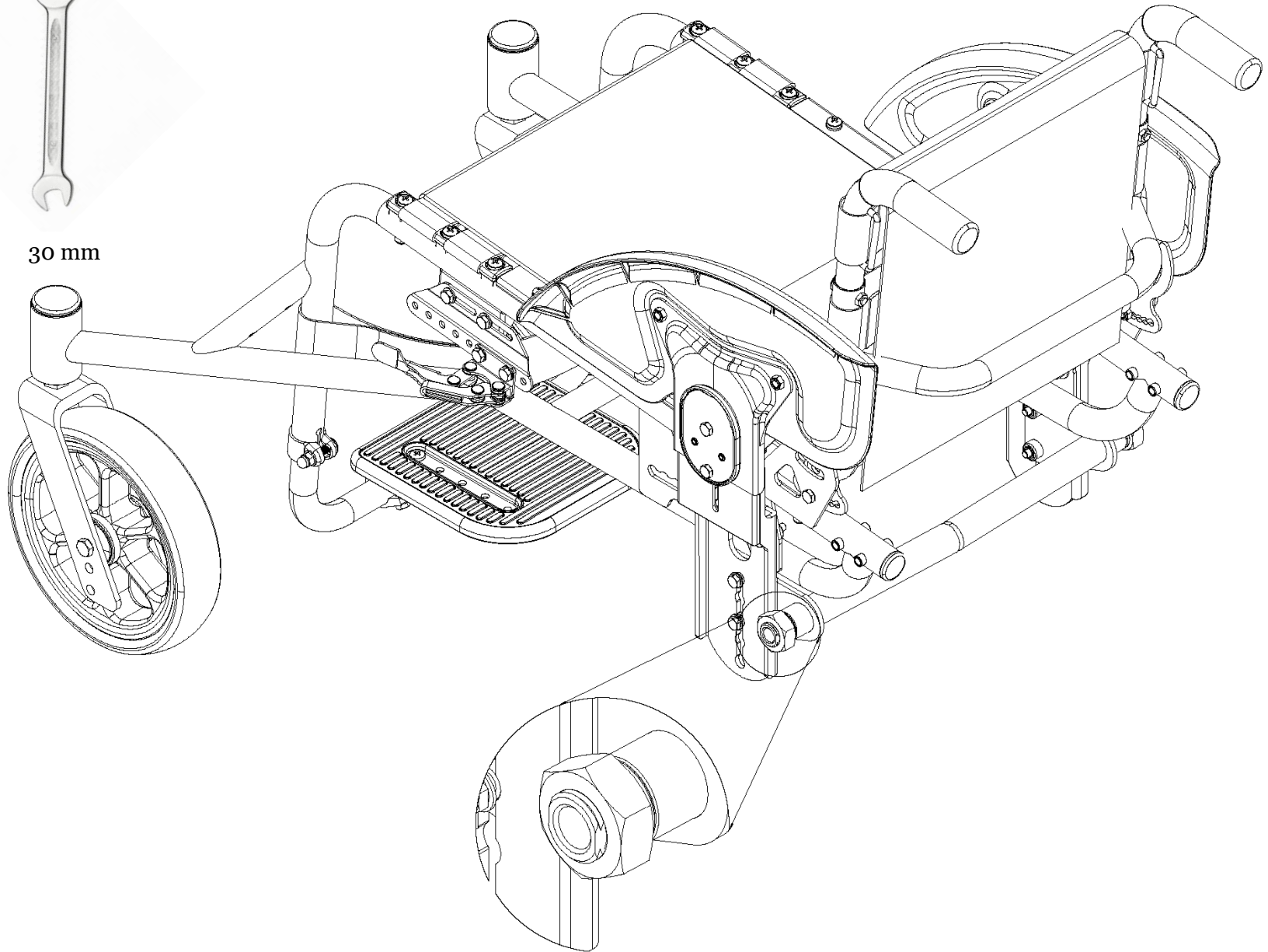
10 mm



Adjustment: Axle Receiver



30 mm



Adjustment: Rear Wheel Push Rim



8 mm

