



# D-Slim Plus

Pressure Relief Wheelchair Cushion

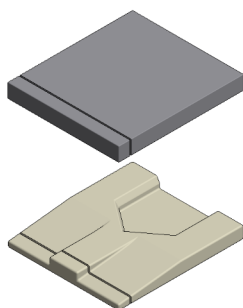
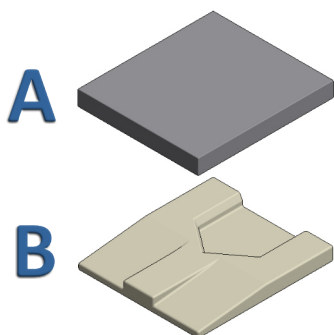


## Cushion Components

## Length Adjustment

**A** — Top Layer

**B** — Contoured Cushion Base



The cushion length can be shortened from the front by cutting out the cushion base and top layer to the desired seat depth.

## Summary

The D-Slim PLUS wheelchair cushion with elastic top cover is a very affordable low-profile, light weight pressure relief cushion. The cushion can be customized anywhere in the field to suit the user's needs. The cushion includes a contoured base, a top "interface" layer of high quality foam, and unique features which enhance pressure management and positioning.

The cushion was tested in an independent testing facility and has met all US Medicare requirements for the E2603 Skin Protection Cushion. The Design is consistent with the World Health Organization guidelines on the provision of manual wheelchairs in less resourced settings and can be delivered according to the wheelchair service training packages.

## Size

Unit/Size	XS	S	M	L	XL
inch (Width x Length)	12 x 16	14 x 18	16 x 18	18 x 18	20 x 18
cm (Width x Length)	30 x 40	35 x 45	40 x 45 cm	45 x 45	50 x 45

### Cushion Base Material

Expanded Polyethylene (EPE) Foam

### Cushion Top Material

High Resiliency (HR) Polyurethane (PU) Foam

### Cushion Cover Material

Sides and bottom: Oxford Nylon water resistant, breathable; Top: Elastic Oxford Nylon water resistant, breathable

### Approximate Product Weight

0.6kg/ 1.3lb

### Weight capacity

114kg/ 250lb

### Tested according to ISO16840-2

Yes



Please contact us at [info@diversable.org](mailto:info@diversable.org) for more information

Please contact us at [productfeedback@diversable.org](mailto:productfeedback@diversable.org) to share your experience with our products in the field.

Lack of/or poorly fitted products can result in permanent deformity or health complications which can lead to death. A wheelchair provider with limited knowledge and skill can improve through direct training and supervised practice. Please note: The D-Slim Plus pressure relief wheelchair cushion design is the property of Diversability Development Organization. No part of this design, including all original concepts and ideas contained herein, may be reproduced or transmitted in any form, or by and means, electronic or mechanical, for any purpose without the express written permission of DDO.